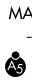


WAAS CH 70609 W28A	APP CRS 288°	Rwy Idg TDZE 88 Apt Elev 97	5911
--	------------------------	---	-------------

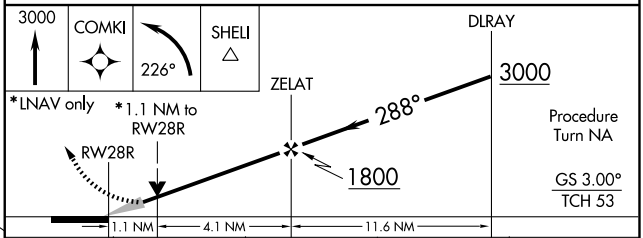
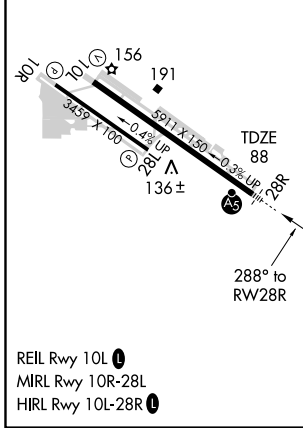
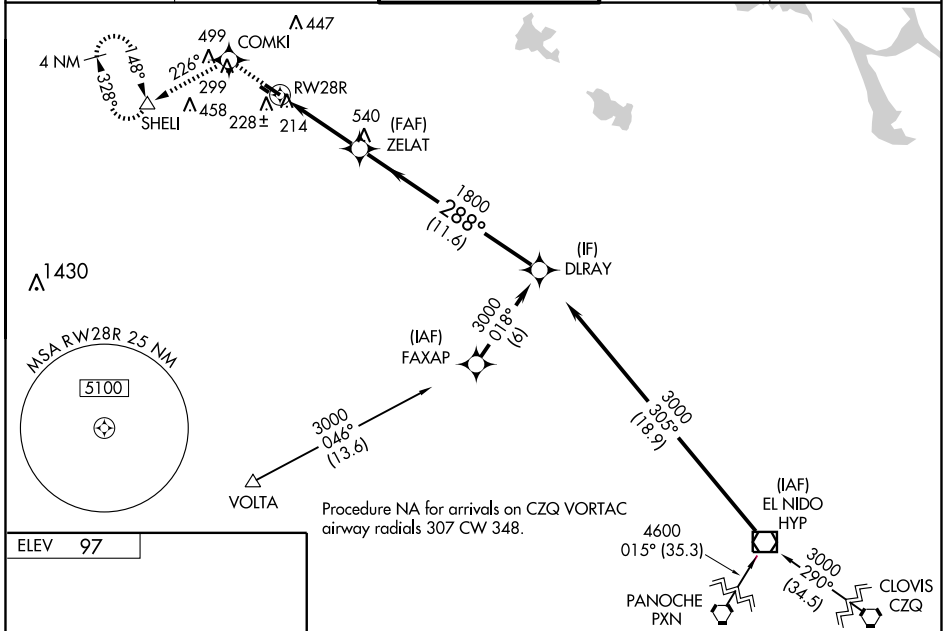
RNAV (GPS) RWY 28R

MODESTO CITY-COUNTY-HARRY SHAM FIELD (MOD)

⚠ For inoperative MALS/R, increase LPV visibility to 1 mile all Cats and LNAV Cat D to 1 1/4 mile.
 For uncompensated Baro-VNAV systems, LNAV/VNAV NA below -15°C (5°F) or above 48°C (118°F). DME/DME RNP-0.3 NA.
 When local altimeter setting not received, use Atwater/Castle altimeter setting and increase all DA/MDA 80 feet; increase LPV, LNAV/VNAV visibilities 1/4 mile all Cats and LNAV Cat C visibility 1/4 mile.
 Baro-VNAV and VDP NA when using Atwater/Castle altimeter setting.
 For inoperative MALS/R, when using Atwater/Castle altimeter setting, increase LPV visibility to 1 1/4 mile all Cats.

MALS/R

MISSED APPROACH: Climb to 3000 direct COMKI and left turn via 226° track to SHEL1 and hold, continue climb-in-hold to 3000.

ATIS 127.7	NORCAL APP CON 120.95 269.45	MODESTO TOWER* 125.3 (CTAF) 0 257.8	GND CON 121.7	UNICOM 122.95
----------------------	--	---	-------------------------	-------------------------



CATEGORY	A	B	C	D
LPV DA		385-1/2	297 (300-1/2)	
LNAV/VNAV DA		495-1	407 (400-1)	
LNAV MDA		480-1/2	392 (400-1/2)	480-1 392 (400-1)
CIRCLING	540-1 443 (500-1)	560-1 463 (500-1)	560-1 1/2 463 (500-1 1/2)	660-2 563 (600-2)

SW-2, 22 OCT 2009 to 19 NOV 2009

SW-2, 22 OCT 2009 to 19 NOV 2009