

ILS or LOC/DME RWY 28R

MODESTO CITY-COUNTY-HARRY SHAM FIELD (MOD)

LOC I-MOD 111.9	APP CRS 288°	Rwy Idg 5911
		TDZE 88
		Apt Elev 97

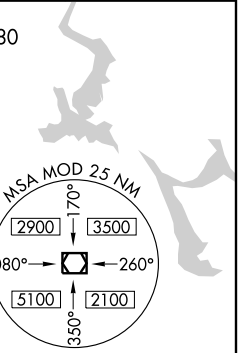
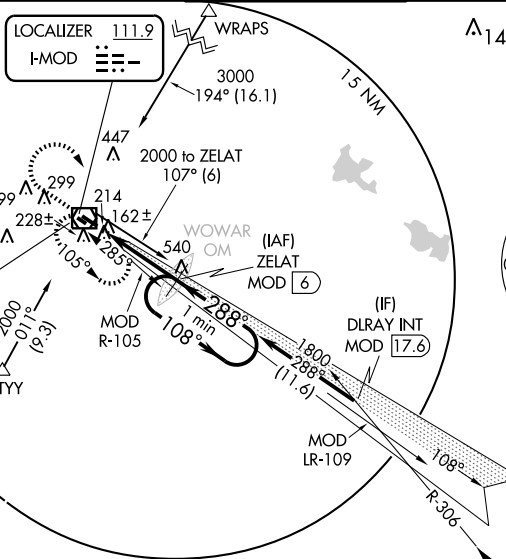
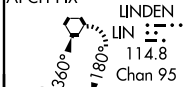
⚠ Autopilot coupled approach NA below 660. For inoperative MALS, increase S-LOC Cat D visibility to 1 mile. When local altimeter setting not received, use Atwater altimeter setting and increase DA 68 feet and all MDAs 80 feet. Increase S-LOC Cat C visibility to ¾. For inoperative MALS, when using Atwater altimeter setting; increase S-ILS 28R all visibilities ½ mile. DME from MOD VOR/DME. Simultaneous reception of I-MOD and MOD DME required.



MISSED APPROACH: Climb to 1500 then climbing right turn to 2000 direct MOD VOR/DME and hold.

ATIS 127.7	NORCAL APP CON 120.95 269.45	MODESTO TOWER* 125.3 (CTAF) 257.8	GND CON 121.7	UNICOM 122.95
----------------------	--	---	-------------------------	-------------------------

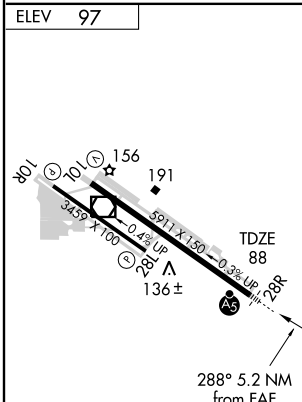
ALTERNATE MISSED APCH FIX



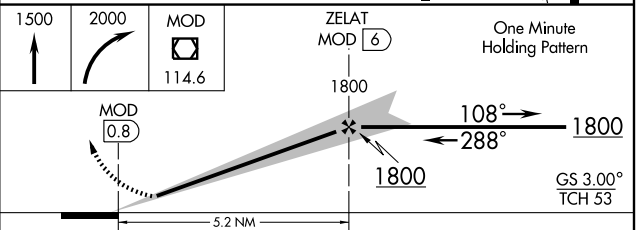
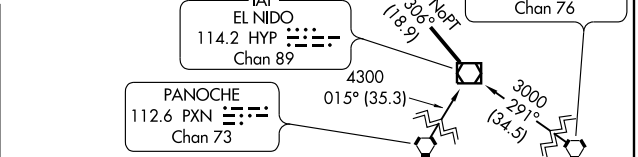
SW-2, 22 OCT 2009 to 19 NOV 2009

SW-2, 22 OCT 2009 to 19 NOV 2009

DME or RADAR REQUIRED



- REIL Rwy 10L
- MIRL Rwy 10R-28L
- HIRL Rwy 10L-28R



CATEGORY	A	B	C	D
S-ILS 28R	288-½ 200 (200-½)			
S-LOC 28R	420-½ 332 (400-½)		420-¾ 332 (400-¾)	
CIRCLING	540-1 443 (500-1)	560-1 463 (500-1)	560-1½ 463 (500-1½)	660-2 563 (600-2)