

# RNAV (GPS) RWY 32

SARASOTA/BRADENTON INTL (SRQ)

WAAS CH <b>72605</b> W32A	APP CRS <b>316°</b>	Rwy Idg TDZE Apt Elev	<b>7510</b> <b>27</b> <b>30</b>
---------------------------------	------------------------	-----------------------------	---------------------------------------



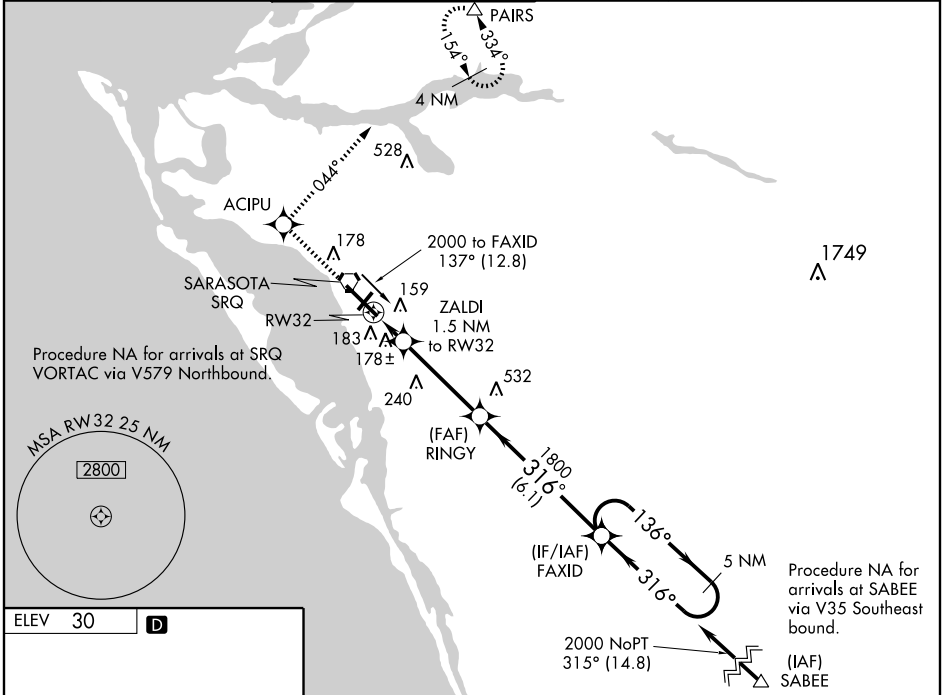
For uncompensated Baro-VNAV systems, LNAV/VNAV NA below -15° C (5° F) or above 49° C (120° F). DME/DME RNP-0.3 NA. For inoperative MALSRS, increase LNAV Cat. D visibility to 1/2. When control tower closed, LPV and LNAV/VNAV NA. Increase LNAV Cats. A, B and C visibility to 1. Inoperative table does not apply to LNAV Cats. A and B. For inoperative MALSRS increase LNAV Cats. C and D visibility to 1/2.

MALSRS



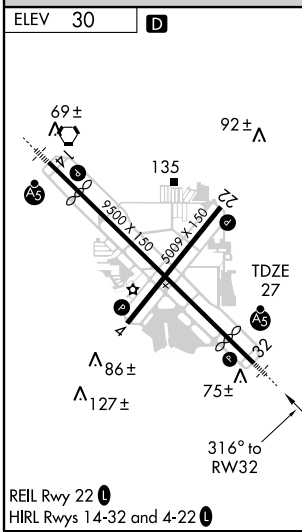
MISSED APPROACH: Climb to 3000 direct ACIPU and via 044° track to PAIRS and hold, continue climb-in-hold to 3000.

ATIS <b>134.15</b>	TAMPA APP CON <b>119.65 353.575</b>	SARASOTA-BRADENTON TOWER★ <b>120.1 (CTAF) 269.7</b>	GND CON <b>121.9 269.7</b>	CLNC DEL <b>118.25</b>	UNICOM <b>122.95</b>
-----------------------	--	--	-------------------------------	---------------------------	-------------------------



SE-3, 22 OCT 2009 to 19 NOV 2009

SE-3, 22 OCT 2009 to 19 NOV 2009



3000	ACIPU	TRK 044°	PAIRS	FAXID	5 NM Holding Pattern
*LNAV only.	ZALDI 1.5 NM to RW32	RINGY		136° → 2000	← 316°
	RW32	*540	1800		GS 3.00° TCH 53
	1.5 NM	3.8 NM	6.1 NM		
CATEGORY	A	B	C	D	
LPV DA		227-1/2	200 (200-1/2)		
LNAV/VNAV DA		463-1	436 (500-1)		
LNAV MDA	440-1/2	413 (500-1/2)	440-3/4 413 (500-3/4)	440-1 413 (500-1)	
CIRCLING	500-1	470 (500-1)	500-1 1/2 470 (500-1 1/2)	580-2 550 (600-2)	