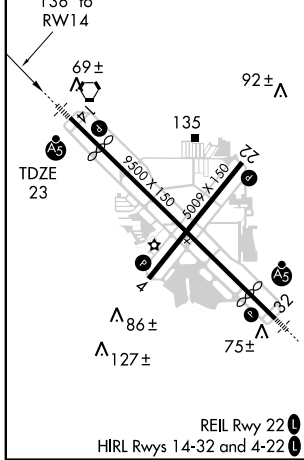
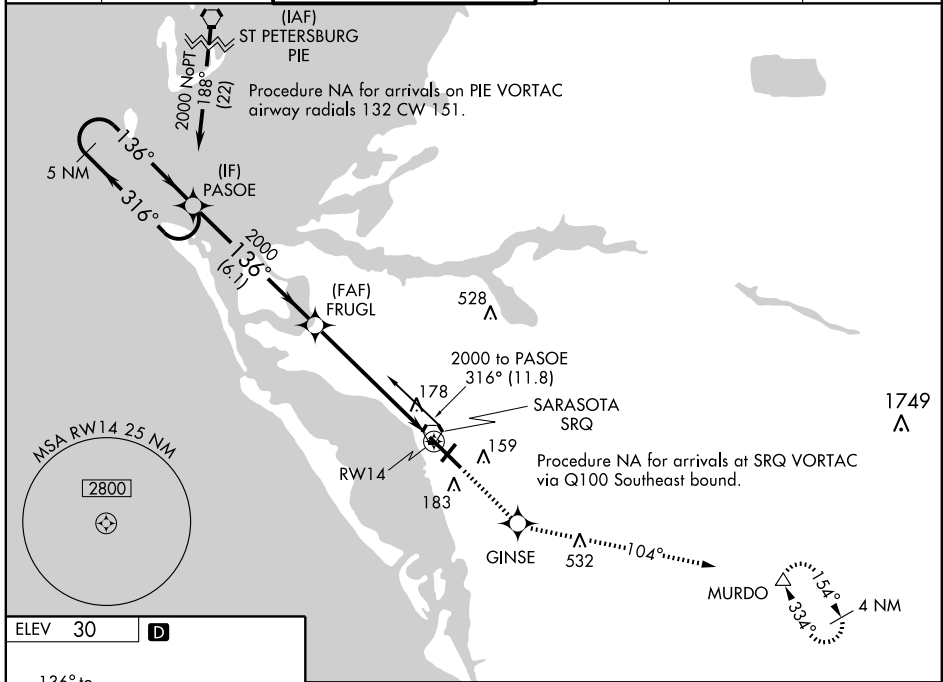


WAAS CH 86705 W14A	APP CRS 136°	Rwy Idg 7540 TDZE 23 Apt Elev 30
--	------------------------	---

RNAV (GPS) RWY 14

SARASOTA/BRADENTON INTL (SRQ)

<p>▼ For uncompensated Baro-VNAV systems, LNAV/VNAV NA below -1.5°C (5°F) or above 49°C (120°F). DME/DME RNP-0.3 NA. For inoperative MALSR, increase LNAV Cat. D visibility to 1¼. When control tower closed, LPV and LNAV/VNAV NA. Increase LNAV Cats. A, B and C visibility to 1 mile; inoperative table does not apply to LNAV Cats. A and B. For inoperative MALSR increase LNAV Cats. C and D visibility to 1¼ miles.</p>		<p>MALSR</p>	<p>MISSED APPROACH: Climb to 3000 direct GINSE and via 104° track to MURDO and hold.</p>		
ATIS 134.15	TAMPA APP CON 119.65 353.575	SARASOTA-BRADENTON TOWER* 120.1(CTAF) 0 269.7	GND CON 121.9 269.7	CLNC DEL 118.25	UNICOM 122.95



5 NM Holding Pattern		3000 ↑	GINSE	TRK 104°	MURDO Δ
PASOE		FRUGL		*1.1 NM to RWY 14 *LNAV only	
2000 ← 316 136° →		2000		RWY 14	
GS 3.00° TCH 53		6.1 NM		4.8 NM	
CATEGORY		A	B	C	D
LPV DA	223-½		200 (200-½)		
LNAV/VNAV DA	488-1		465 (500-1)		
LNAV MDA	440-½	417 (500-½)	440-¾ 417 (500-¾)	440-1 417 (500-1)	
CIRCLING	500-1	470 (500-1)	500-1½ 470 (500-1½)	580-2 550 (600-2)	

SE-3, 22 OCT 2009 to 19 NOV 2009

SE-3, 22 OCT 2009 to 19 NOV 2009