

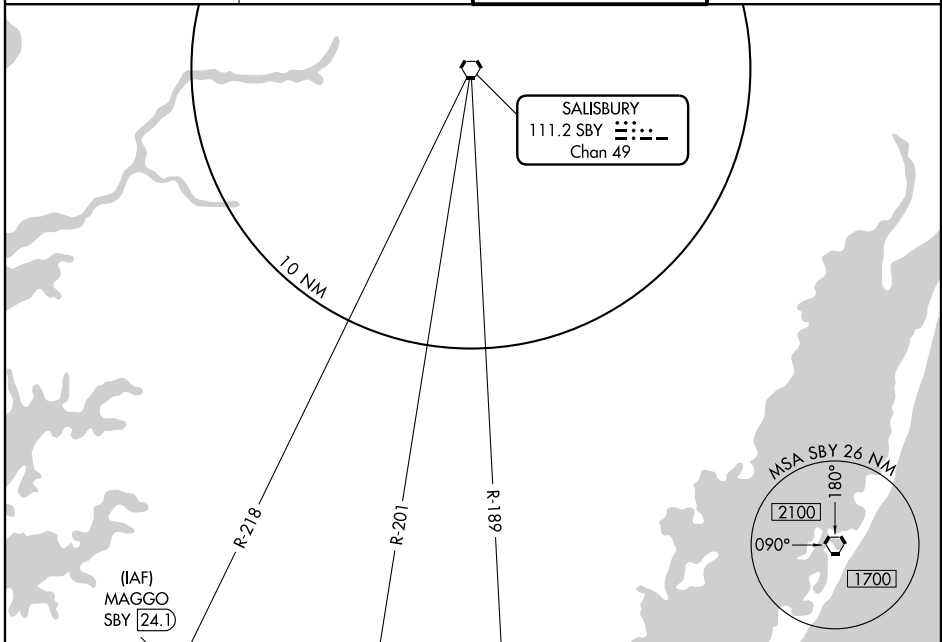
# VOR/DME or TACAN RWY 10

WALLOPS FLIGHT FACILITY (WAL)

VORTAC SBY <b>111.2</b> Chan <b>49</b>	APP CRS SBY <b>(24.1)</b> Arc	Rwy Idg <b>8005</b> TDZE <b>38</b> Apt Elev <b>40</b>
--	----------------------------------	---

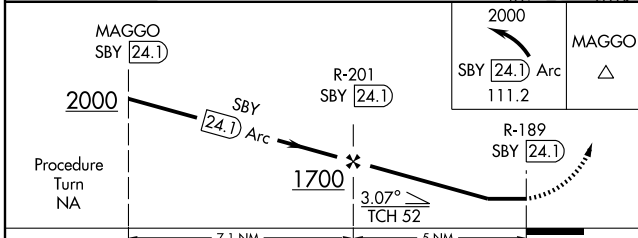
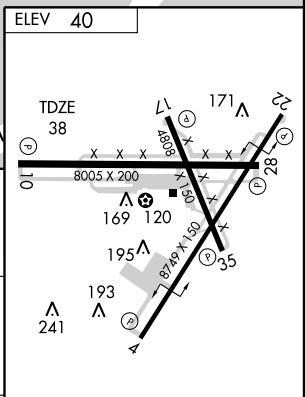
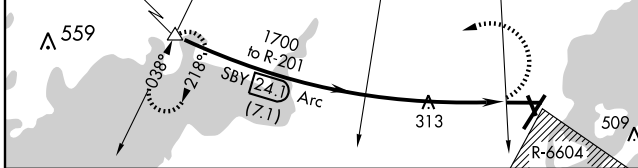
**MISSSED APPROACH:** Climbing left turn to 2000 via the SBY 24.1 DME Arc clockwise to MAGGO/SBY R-218 24.1 DME and hold.

ASOS <b>119.175</b>	PATUXENT APP CON * <b>127.95 314.0</b>	NASA WALLOPS TOWER * <b>126.5 394.3</b>	CLNC DEL <b>121.7</b>
------------------------	---	--	--------------------------



NE-3, 22 OCT 2009 to 19 NOV 2009

NE-3, 22 OCT 2009 to 19 NOV 2009



CATEGORY	A	B	C	D
S-10	900-1 862 (900-1)	900-1 1/4 862 (900-1 1/4)	900-2 1/2 862 (900-2 1/2)	900-2 3/4 862 (900-2 3/4)
CIRCLING	900-1 860 (900-1)	900-1 1/4 860 (900-1 1/4)	900-2 1/2 860 (900-2 1/2)	900-2 3/4 860 (900-2 3/4)

REIL all Rwys  
HIRL Rwys 4-22, 10-28 and 17-35

Knots	60	90	120	150	180
Min:Sec					