

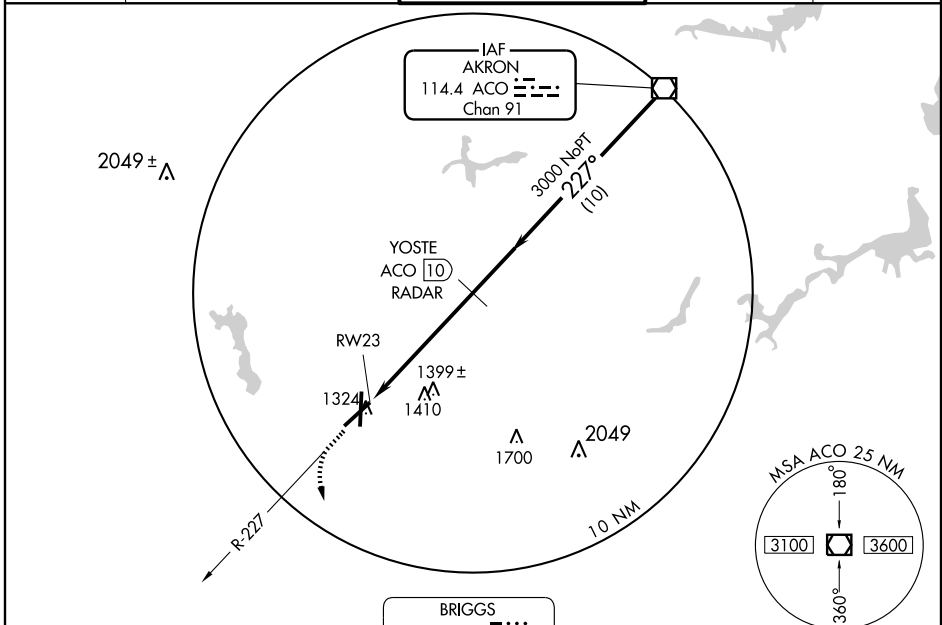
VOR or GPS RWY 23

AKRON-CANTON RGNL(CAK)

VOR/DME ACO 114.4 Chan 91	APP CRS 227°	Rwy ldg 7597 TDZE 1228 Apt Elev 1228
---	------------------------	---

ASR	MALSR	MISSED APPROACH: Climb to 3000 then left turn direct BSV VOR/DME and hold.
-----	-------	--

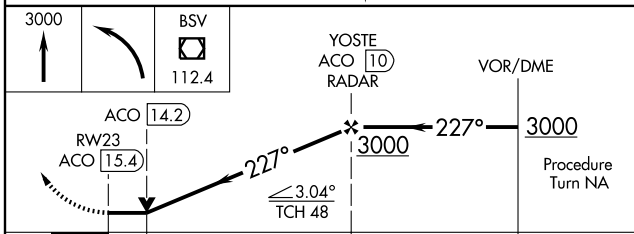
ATIS 121.05	AKRON-CANTON APP CON * EAST 125.5 371.875 WEST 118.6 323.0	AKRON-CANTON TOWER 118.3 257.8	GND CON 121.7 348.6	CLNC DEL 132.05
-----------------------	--	--	-------------------------------	---------------------------



EC-2, 22 OCT 2009 to 19 NOV 2009

EC-2, 22 OCT 2009 to 19 NOV 2009

RADAR or DME REQUIRED



CATEGORY	A	B	C	D
S-23	1660/24 432 (500-½)	1660/40 432 (500-¾)	1660/50 432 (500-1)	1660/50 432 (500-1)
CIRCLING	1680-1 452 (500-1)	1680-1½ 452 (500-1½)	1780-2 552 (600-2)	

