

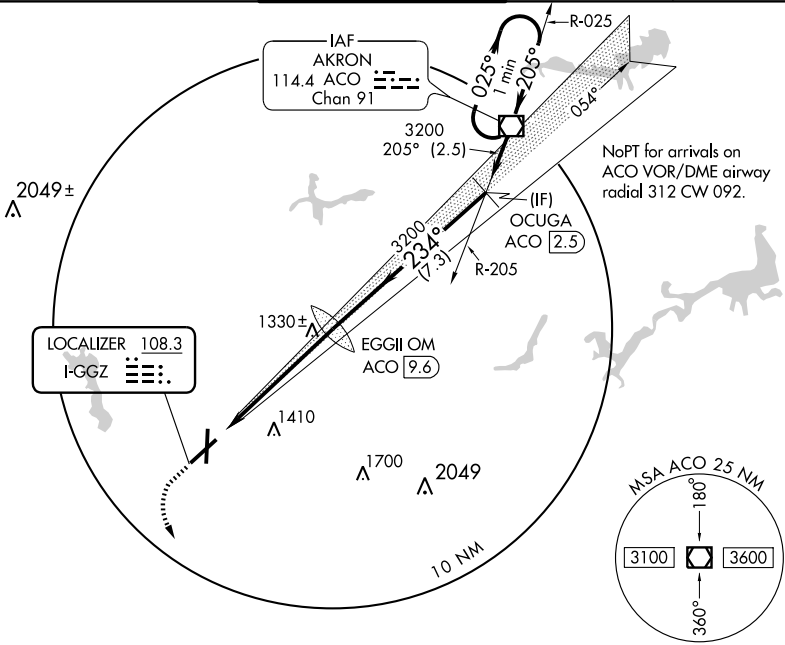
ILS or LOC RWY 23

AKRON-CANTON RGNL (CAK)

LOC I-GGZ 108.3	APP CRS 234°	Rwy ldg 7597 TDZE 1228 Apt Elev 1228
---------------------------	------------------------	---

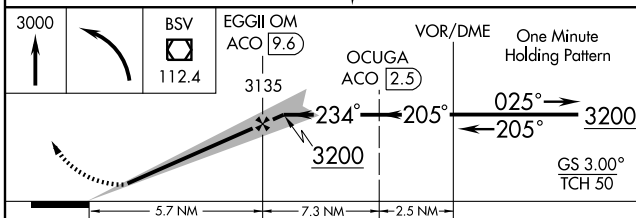
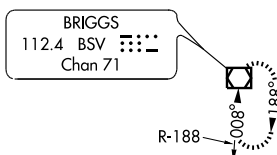
ASR Autopilot coupled approach NA below 1574 feet.	MALSR 	MISSED APPROACH: Climb to 3000 then left turn direct BSV VOR/DME and hold.
---	-----------	--

ATIS 121.05	AKRON-CANTON APP CON * EAST 125.5 371.875 WEST 118.6 323.0	AKRON-CANTON TOWER 118.3 257.8	GND CON 121.7 348.6	CLNC DEL 132.05
-----------------------	--	--	-------------------------------	---------------------------

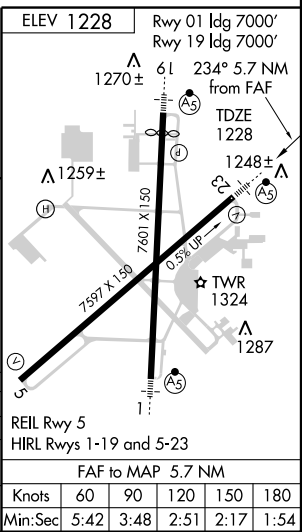


EC-2, 22 OCT 2009 to 19 NOV 2009

EC-2, 22 OCT 2009 to 19 NOV 2009



CATEGORY	A	B	C	D
S-ILS 23	1428/24 200 (200-1/2)			
S-LOC 23	1580/24 352 (400-1/2)		1580/40 352 (400-3/4)	
CIRCLING	1760-1 532 (600-1)		1760-1 1/2 532 (600-1 1/2)	1780-2 552 (600-2)



Knots	60	90	120	150	180
Min:Sec	5:42	3:48	2:51	2:17	1:54