

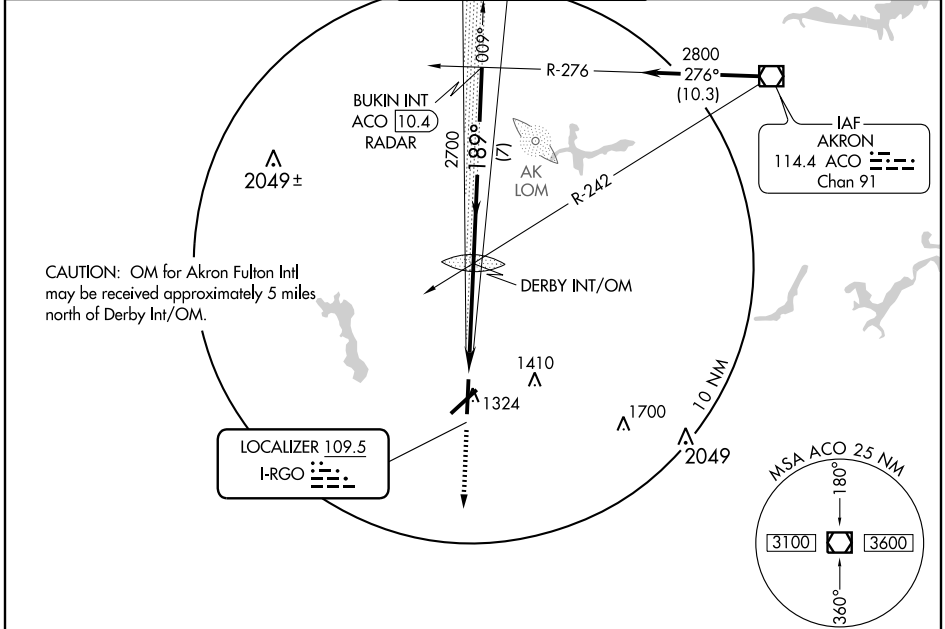
LOC I-RGO 109.5	APP CRS 189°	Rwy ldg 7000 TDZE 1218 Apt Elev 1228
---------------------------	------------------------	---

ILS or LOC RWY 19

AKRON-CANTON RGNL (CAK)

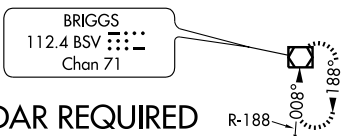
<p>▽ If local altimeter setting not received, use Akron Fulton Intl altimeter setting and increase all DH/MDAs 40 feet.</p> <p>△ ASR *RVR 1800 authorized with the use of FD or AP or HUD to DA.</p>	<p>MALSR</p>	<p>MISSED APPROACH: Climb to 3000 direct BSV VOR/DME and hold.</p>
--	---------------------	---

<p>ATIS 121.05</p>	<p>AKRON-CANTON APP CON * EAST 125.5 371.875 WEST 118.6 323.0</p>	<p>AKRON-CANTON TOWER 118.3 257.8</p>	<p>GND CON 121.7 348.6</p>	<p>CLNC DEL 132.05</p>
--------------------------------------	--	---	--	--

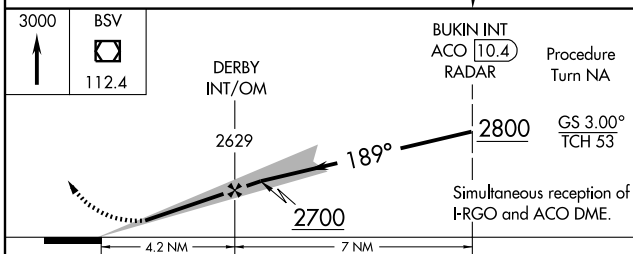


EC-2, 22 OCT 2009 to 19 NOV 2009

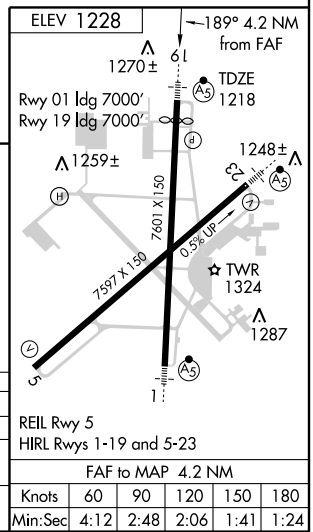
EC-2, 22 OCT 2009 to 19 NOV 2009



DME or RADAR REQUIRED



3000	BSV	112.4	Procedure Turn NA	
DERBY INT/OM		2629	2800	
BUKIN INT ACO 10.4 RADAR		2700	GS 3.00° TCH 53	
CATEGORY	A	B	C	D
S-ILS 19	*1418/24		200 (200-½)	
S-LOC 19	1560/24		342 (400-½)	1560/40 342 (400-¾)
CIRCLING	1760-1	532 (600-1)	1760-1½ 532 (600-1½)	1780-2 552 (600-2)



REIL Rwy 5	HIRL Rws 1-19 and 5-23	FAF to MAP 4.2 NM			
Knots	60	90	120	150	180
Min:Sec	4:12	2:48	2:06	1:41	1:24