

ILS or LOC RWY 1

AKRON-CANTON RGNL (CAK)

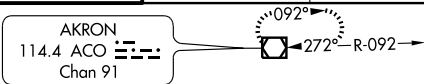
LOC I-CAK 109.5	APP CRS 009°	Rwy ldg TDZE Apt Elev	7000 1209 1228
---------------------------	------------------------	-----------------------------	---

ASR **RVR 1800 authorized with the use of FD or AP or HUD to DA.

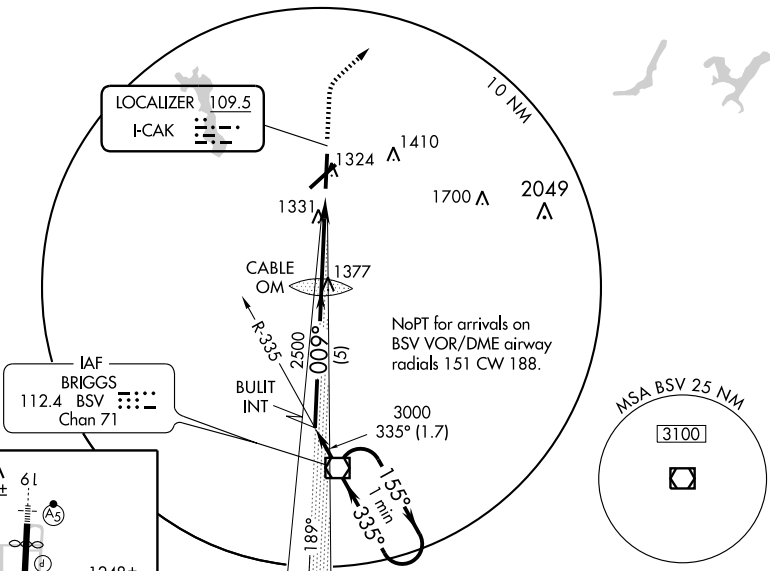


MISSED APPROACH: Climb to 1900, then climbing right turn to 3000 direct ACO VOR/DME and hold.

ATIS 121.05	AKRON-CANTON APP CON * EAST 125.5 371.875 WEST 118.6 323.0	AKRON-CANTON TOWER 118.3 257.8	GND CON 121.7 348.6	CLNC DEL 132.05
-----------------------	--	--	-------------------------------	---------------------------



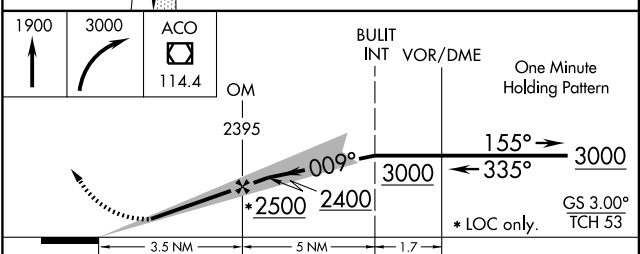
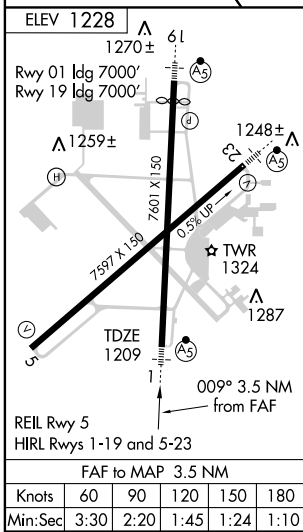
△ 2049±



NoPT for arrivals on BSV VOR/DME airway radials 151 CW 188.

EC-2, 22 OCT 2009 to 19 NOV 2009

EC-2, 22 OCT 2009 to 19 NOV 2009



CATEGORY	A	B	C	D
S-ILS 1	**1409/24 200 (200-1/2)			
S-LOC 1	1600/24 391 (400-1/2)			1600/40 391 (400-3/4)
CIRCLING	1760-1 532 (600-1)		1760-1 1/2 532 (600-1 1/2)	1780-2 552 (600-2)