

# VOR RWY 22

EL DORADO/ SOUTH ARKANSAS RGNL AT GOODWIN FIELD (ELD)

VORTAC ELD <b>115.5</b> Chan <b>102</b>	APP CRS <b>232°</b>	Rwy Idg <b>6601</b> TDZE <b>260</b> Apt Elev <b>277</b>
---	------------------------	---

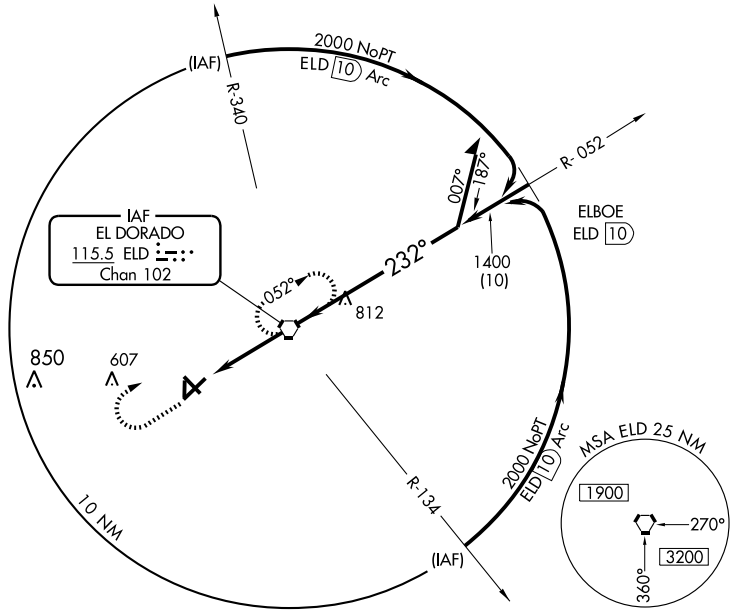


When local altimeter setting not received, procedure not authorized. For inoperative MALS/R, increase S-22 Cat D visibility to 1 1/4.



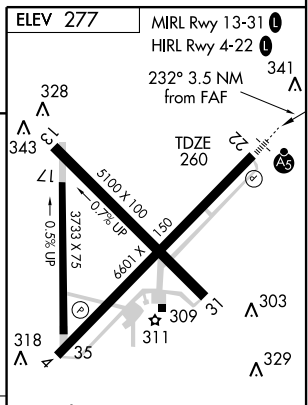
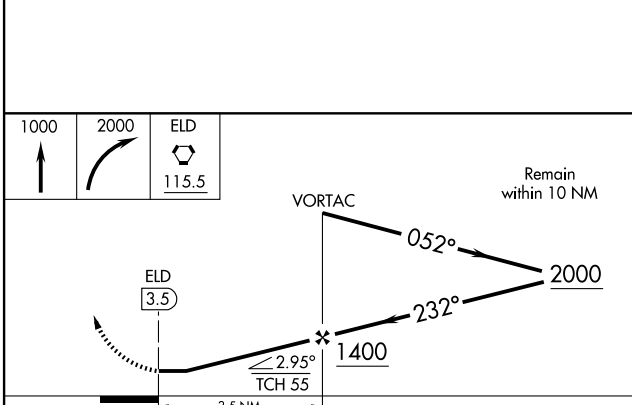
MISSED APPROACH: Climb to 2000 then climbing right turn to 2000 direct ELD VORTAC and hold.

ASOS <b>118.325</b>	FORT WORTH CENTER <b>128.2 269.1</b>	UNICOM <b>123.0</b> (CTAF) <b>1</b>
------------------------	---	--



SC-1, 22 OCT 2009 to 19 NOV 2009

SC-1, 22 OCT 2009 to 19 NOV 2009



CATEGORY	A	B	C	D
S-22	660-1/2 400 (400-1/2)			660-1 400 (400-1)
CIRCLING	740-1	463 (500-1)	740-1 1/2 463 (500-1 1/2)	840-2 563 (600-2)

FAF to MAP 3.5 NM					
Knots	60	90	120	150	180
Min:Sec	3:30	2:20	1:45	1:24	1:10

# VOR RWY 22