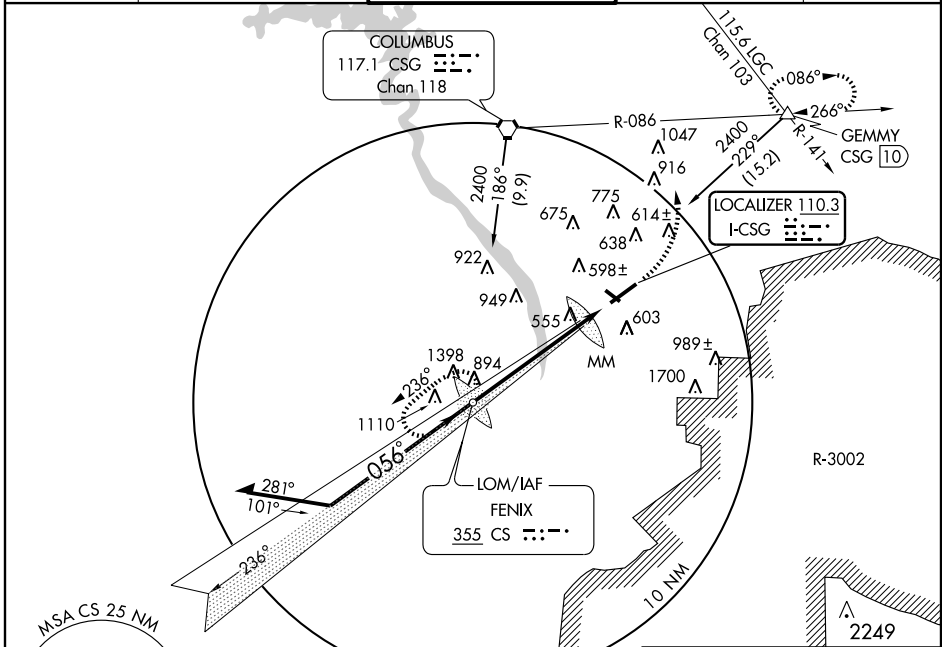


ILS or LOC RWY 6 COLUMBUS METROPOLITAN (CSG)

LOC I-CSG 110.3	APP CRS 056°	Rwy Idg 6997
		TDZE 380
		Apt Elev 397

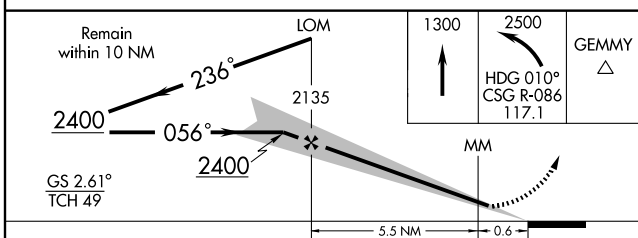
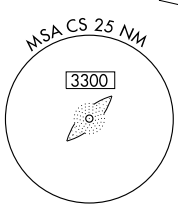
<p>ADF or RADAR REQUIRED Glide slope unuseable for coupled approaches below 780 MSL.</p>	<p>MALSR</p>	<p>MISSED APPROACH: Climb to 1300 then climbing left turn to 2500 via heading 010° and CSG R-086 to GEMMY Int/CSG 10 DME and hold.</p>
--	--------------	--

ATIS 127.75	ATLANTA APP CON * 125.5 323.1	COLUMBUS TOWER * 120.1 (CTAF) 257.8	GND CON 121.9 348.6	UNICOM 122.95
-----------------------	---	---	-------------------------------	-------------------------



SE-4, 22 OCT 2009 to 19 NOV 2009

SE-4, 22 OCT 2009 to 19 NOV 2009



CATEGORY	A	B	C	D
S-ILS 6		580/24	200 (200-1/2)	
S-LOC 6	980/24	600 (600-1/2)	980/50 600 (600-1)	980/60 600 (600-1/4)
CIRCLING	980-1	583 (600-1)	980-1 1/2 583 (600-1/2)	980-2 583 (600-2)

FAF to MAP 6.1 NM					
Knots	60	90	120	150	180
Min:Sec	6:06	4:04	3:03	2:26	2:02