

MINOT, NORTH DAKOTA

AL-635 (FAA)

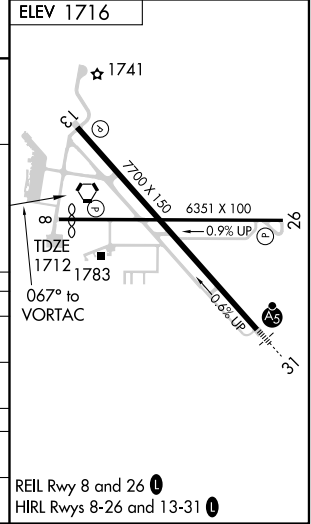
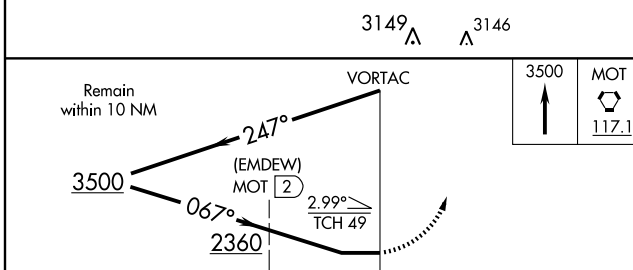
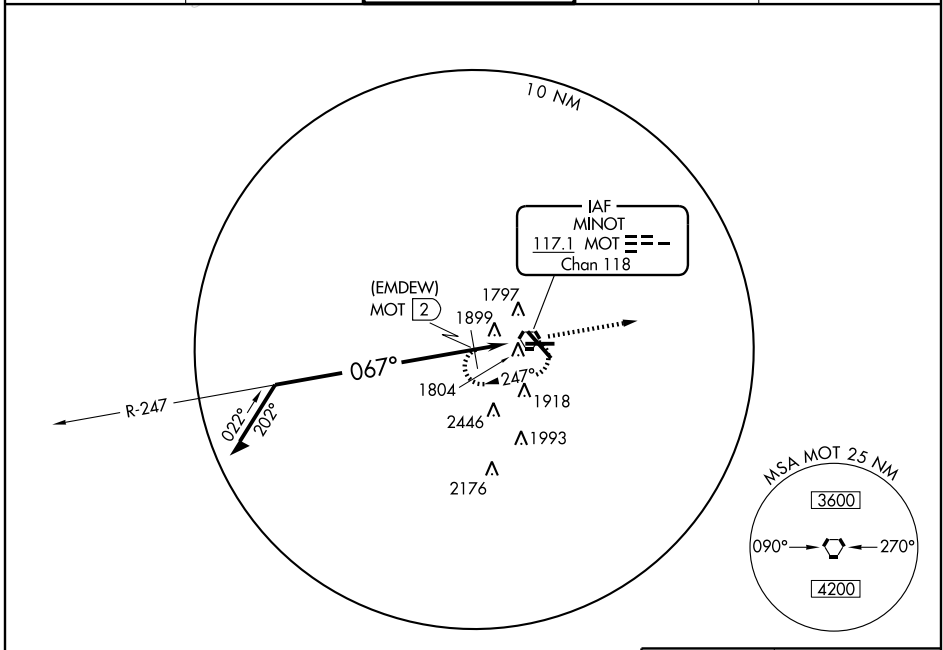
VORTAC MOT <b>117.1</b> Chan <b>118</b>	APP CRS <b>067°</b>	Rwy Idg <b>5958</b> TDZE <b>1712</b> Apt Elev <b>1716</b>
---	------------------------	---

# VOR or GPS RWY 8

MINOT INTL (MOT)

**MISSED APPROACH:** Climb to 3500 then direct MOT VORTAC and hold.

ASOS <b>118.725</b>	MINOT APP CON * <b>119.6 363.8</b>	MAGIC CITY TOWER * <b>118.2 (CTAF) 393.1</b>	GND CON <b>121.9 393.1</b>	UNICOM <b>122.95</b>
------------------------	---------------------------------------	---	-------------------------------	-------------------------



CATEGORY	A	B	C	D
S-8	2360-1	648 (700-1)	2360-1¼ 648 (700-1¾)	2360-2 648 (700-2)
CIRCLING	2360-1	644 (700-1)	2360-1¼ 644 (700-1¾)	2360-2 644 (700-2)
DME MINIMUMS				
S-8	2160-1	448 (500-1)	2160-1¼ 448 (500-1¾)	2160-1½ 448 (500-1½)
CIRCLING	2200-1	484 (500-1)	2280-1½ 564 (600-1½)	2280-2 564 (600-2)

MINOT, NORTH DAKOTA  
Amdt 10B 09015

48°15'N-101°17'W

# VOR or GPS RWY 8

MINOT INTL (MOT)

NC-1, 22 OCT 2009 to 19 NOV 2009

NC-1, 22 OCT 2009 to 19 NOV 2009