

MINOT, NORTH DAKOTA

AL-635 (FAA)

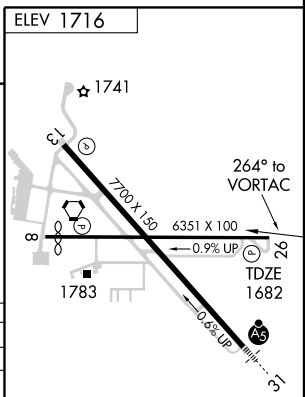
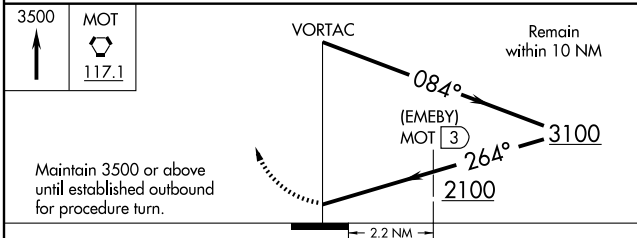
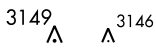
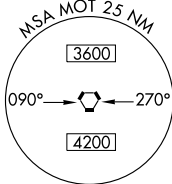
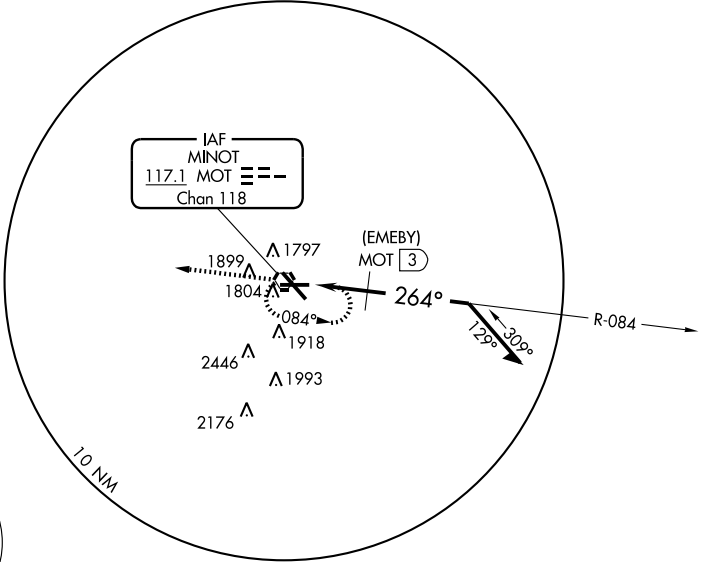
# VOR or GPS RWY 26

MINOT INTL (MOT)

VORTAC MOT <b>117.1</b> Chan <b>118</b>	APP CRS <b>264°</b>	Rwy Idg <b>6351</b> TDZE <b>1682</b> Apt Elev <b>1716</b>
---	------------------------	---

MISSED APPROACH: Climb to 3500 then direct MOT VORTAC and hold.

ASOS <b>118.725</b>	MINOT APP CON * <b>119.6 363.8</b>	MAGIC CITY TOWER * <b>118.2 (CTAF) 393.1</b>	GND CON <b>121.9 393.1</b>	UNICOM <b>122.95</b>
------------------------	---------------------------------------	---	-------------------------------	-------------------------



CATEGORY	A	B	C	D
S-26	2100-1	418 (400-1)	2100-1 ¼	418 (400-1 ¼)
CIRCLING	2200-1	484 (500-1)	2280-1 ½	2280-2
DME MINIMA				
S-26	2040-1 358 (400-1)		2040-1 ¼	
CIRCLING	2200-1	484 (500-1)	2280-1 ½	2280-2

REIL Rwy 8 and 26

HIRL Rws 8-26 and 13-31

MINOT, NORTH DAKOTA  
Amdt 12B 09015

48°15'N-101°17'W

# VOR or GPS RWY 26

MINOT INTL (MOT)

NC-1, 22 OCT 2009 to 19 NOV 2009

NC-1, 22 OCT 2009 to 19 NOV 2009