

MINOT, NORTH DAKOTA

AL-635 (FAA)

VOR RWY 13

MINOT INTL (MOT)

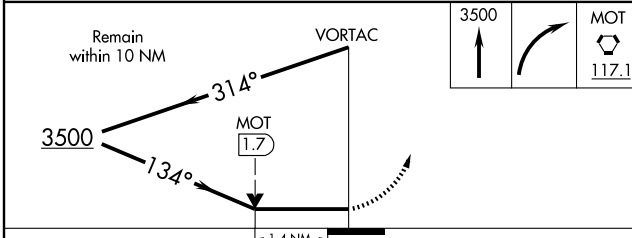
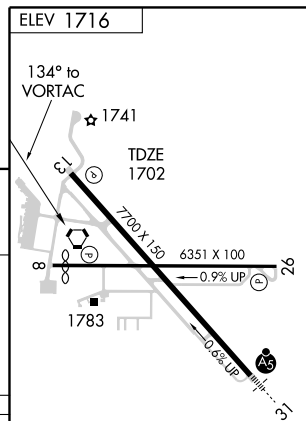
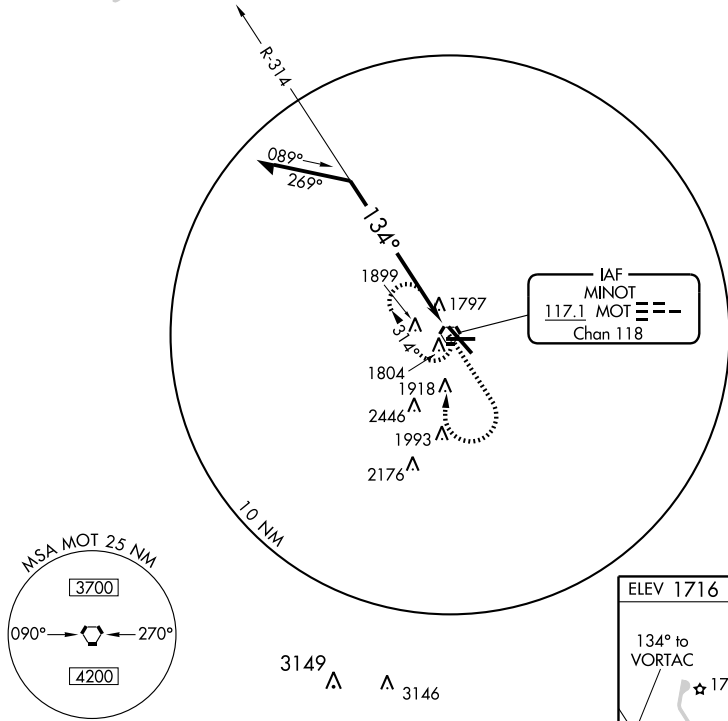
VORTAC MOT 117.1 Chan 118	APP CRS 134°	Rwy Idg 7700 TDZE 1702 Apt Elev 1716
---	------------------------	---

MISSED APPROACH: Climb to 3500 then right turn direct MOT VORTAC and hold.

ASOS 118.725	MINOT APP CON * 119.6 363.8	MAGIC CITY TOWER * 118.2 (CTAF) 393.1	GND CON 121.9 393.1	UNICOM 122.95
------------------------	---------------------------------------	---	-------------------------------	-------------------------

NC-1, 22 OCT 2009 to 19 NOV 2009

NC-1, 22 OCT 2009 to 19 NOV 2009



CATEGORY	A	B	C	D
S-13	2200-1	498 (500-1)	2200-1½ 498 (500-1¼)	2200-1½ 498 (500-1½)
CIRCLING	2200-1	484 (500-1)	2280-1½ 564 (600-1½)	2280-2 564 (600-2)

REIL Rwy 8 and 26
HIRL Rws 8-26 and 13-31

MINOT, NORTH DAKOTA
Amdt 11 09015

48°15'N-101°17'W

MINOT INTL (MOT)

VOR RWY 13