

MINOT, NORTH DAKOTA

AL-635 (FAA)

# RNAV (GPS) RWY 31

MINOT INTL (MOT)

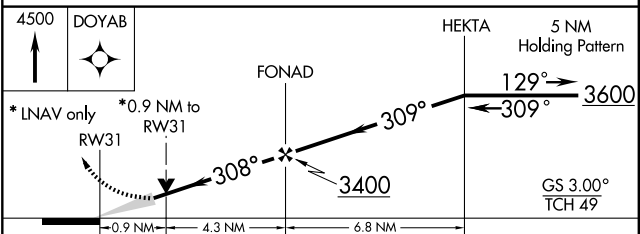
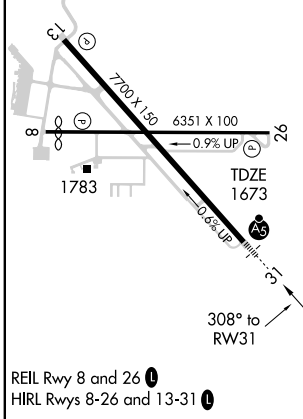
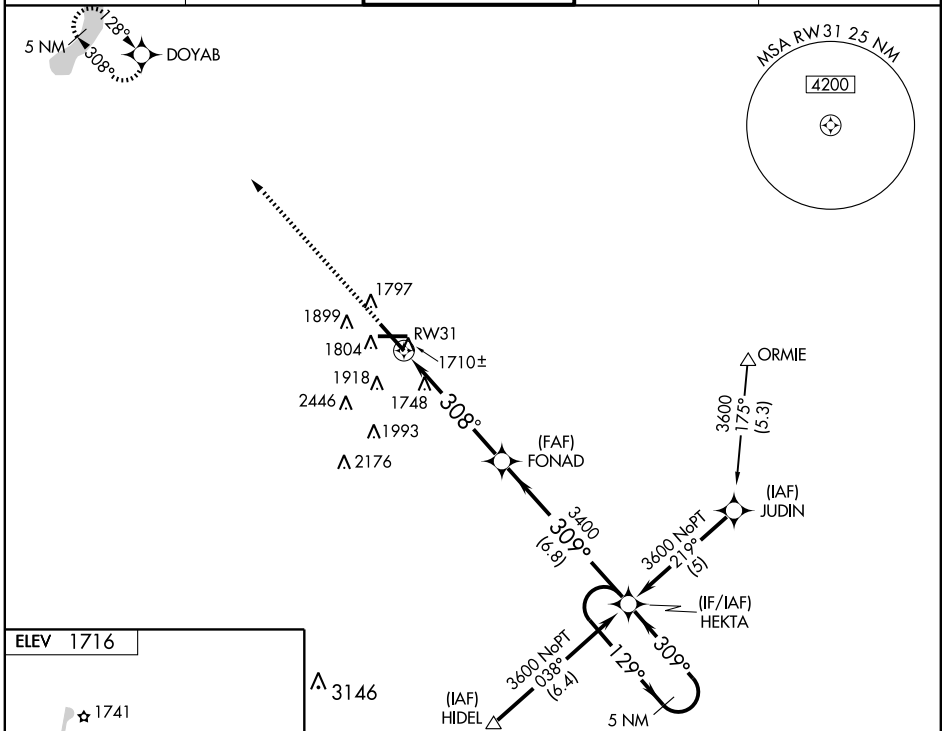
WAAS Chan <b>66099</b> W31A	APP CRS <b>308°</b>	Rwy Idg TDZE Apt Elev	<b>7700</b> <b>1673</b> <b>1716</b>
-----------------------------------	------------------------	-----------------------------	---

**⚠** If local altimeter setting not received use Minot AFB altimeter setting and increase all DAs/MDAs 40 feet. Baro-VNAV NA below -18°C (0°F). VDP and Baro-VNAV NA when using Minot AFB altimeter setting. For inoperative MALSRS increase LPV visibility to RVR 5000 all Cats, LNAV/VNAV Cat D visibility to RVR 5000. Inoperative table does not apply to LNAV Cat D. DME/DME RNP-0.3 NA.

MALSRS

MISSED APPROACH: Climb to 4500 direct DOYAB and hold.

ASOS <b>118.725</b>	MINOT APP CON * <b>119.6 363.8</b>	MAGIC CITY TOWER * <b>118.2 (CTAF) 0 393.1</b>	GND CON <b>121.9 393.1</b>	UNICOM <b>122.95</b>
------------------------	---------------------------------------	---	-------------------------------	-------------------------



CATEGORY	A	B	C	D
LPV DA	1923/24 250 (300-1/2)			
LNAV/VNAV DA	1960/24 287 (300-1/2)		1960/40 287 (300-3/4)	
LNAV MDA	2000/24 327 (300-1/2)		2000/50 327 (300-1)	
CIRCLING	2200-1 484 (500-1)		2280-1 1/2 564 (600-1 1/2)	2280-2 564 (600-2)

MINOT, NORTH DAKOTA  
Amdt 1 09015

48°15'N-101°17'W

# RNAV (GPS) RWY 31

NC-1, 22 OCT 2009 to 19 NOV 2009

NC-1, 22 OCT 2009 to 19 NOV 2009