

LOC/DME BC RWY 13

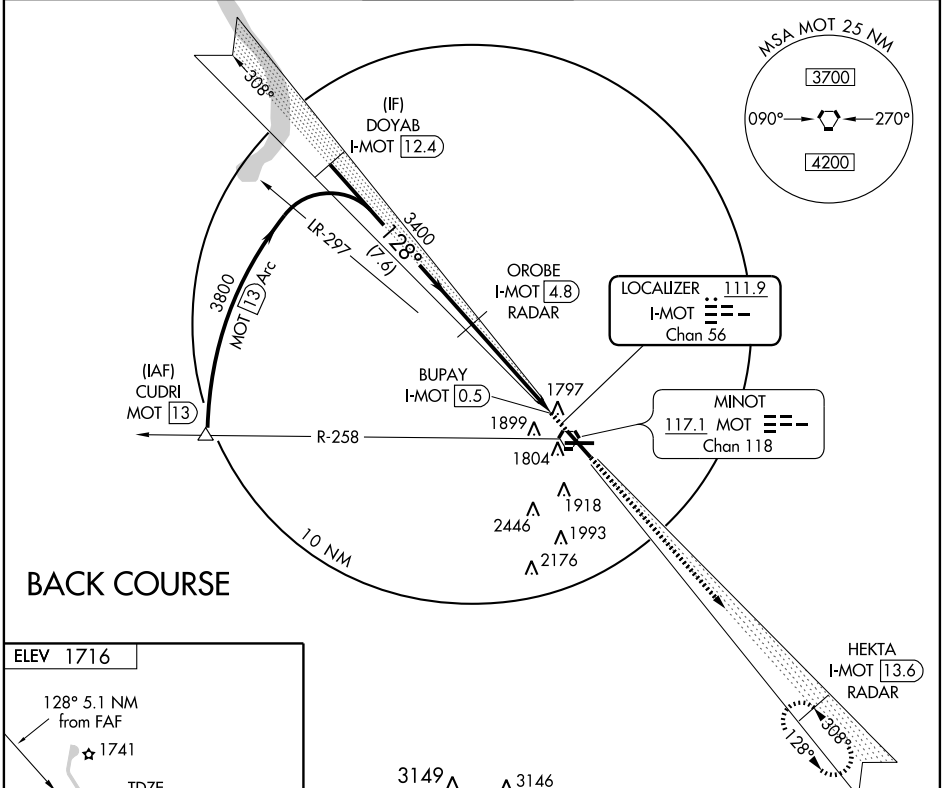
MINOT INTL (MOT)

LOC/DME I-MOT 111.9 Chan 56	APP CRS 128°	Rwy Idg 7700 TDZE 1702 Apt Elev 1716
-------------------------------------------------	------------------------	-----------------------------------------------------------------

⚠ If local altimeter not received use Minot AFB altimeter setting and increase all MDAs 40 feet.

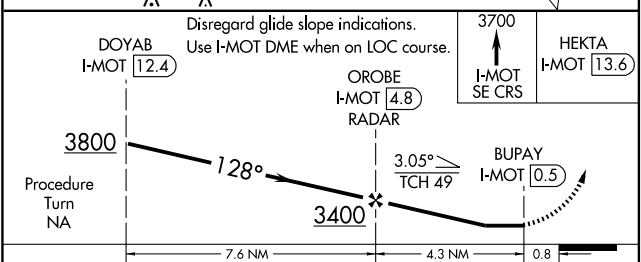
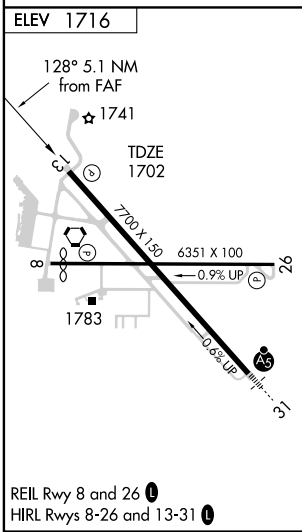
⚠ MISSED APPROACH: Climb to 3700 via I-MOT LOC SE course to HEKTA/I-MOT 13.6 DME/RADAR and hold.

ASOS 118.725	MINOT APP CON * 119.6 363.8	MAGIC CITY TOWER * 118.2 (CTAF) 0 393.1	GND CON 121.9 393.1	UNICOM 122.95
------------------------	---------------------------------------	---------------------------------------------------	-------------------------------	-------------------------



NC-1, 22 OCT 2009 to 19 NOV 2009

NC-1, 22 OCT 2009 to 19 NOV 2009



CATEGORY	A	B	C	D
S-13	2060-1 358 (400-1)			2060-1½ 358 (400-1½)
CIRCLING	2200-1 484 (500-1)	2280-1½ 564 (600-1½)		2280-2 564 (600-2)