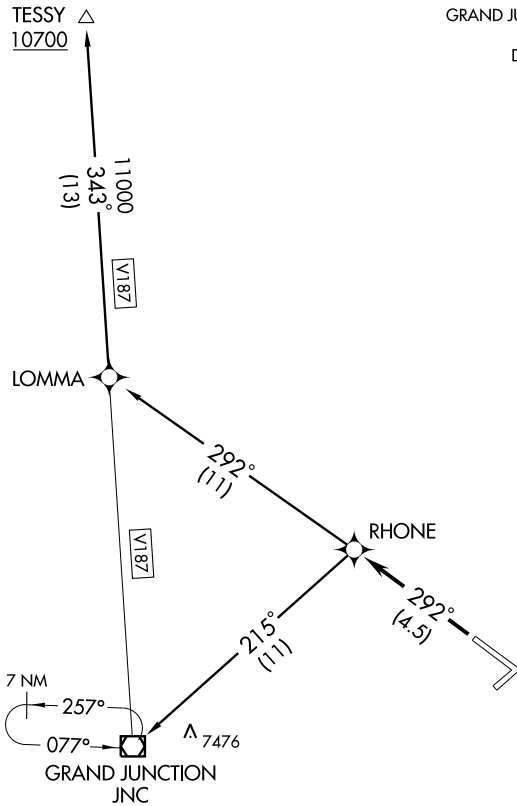


ATIS 118.55
GND CON
121.7 257.8
GRAND JUNCTION TOWER *
118.1 257.8
DENVER DEP CON *
119.7 317.4
UNICOM 122.95



TAKE-OFF MINIMUMS

Rwy 4, 11, 22: NA.

Rwy 29: GRAND JUNCTION TRANSITION: 2700-2 or standard with a minimum climb of 280' per NM from take-off to 8000'

TESSY TRANSITION: 2700-2 or standard with a minimum climb of 220' per NM from LOMMA WP to TESSY INT or 210' per NM from take-off to 10700'.

NOTE: 1. GPS Required.
2. RNAV 1



DEPARTURE ROUTE DESCRIPTION

TAKE-OFF RUNWAY 29: Climb via 292° course to RHONE WP.

GRAND JUNCTION TRANSITION (RHONE2.JNC)

TESSY TRANSITION (RHONE2.TESSY)