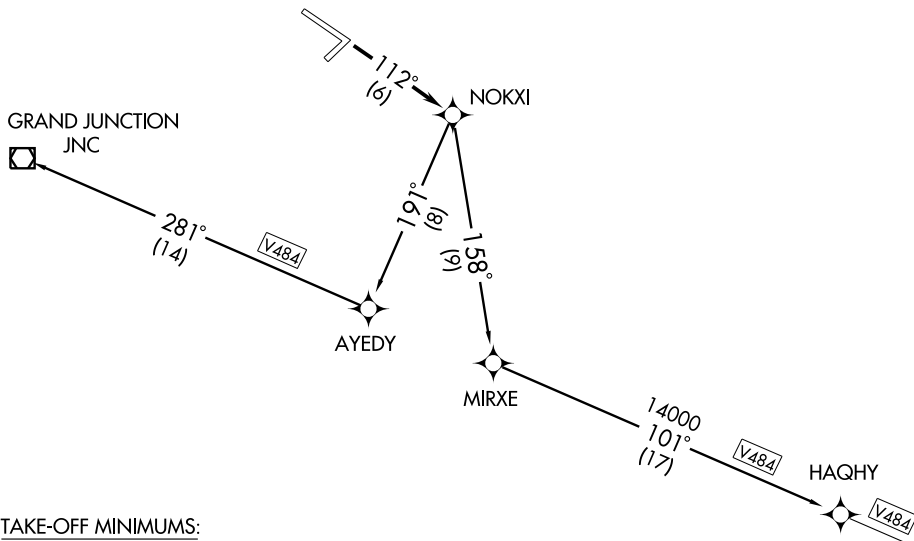


NOTE: 1. GPS Required.  
2. RNAV 1



TAKE-OFF MINIMUMS:

Rwy 4, 22, 29: NA.

Rwy 11: GRAND JUNCTION TRANSITION: 2300-3 or standard with a minimum climb of 250' per NM from take-off to 8000'. HAQHY TRANSITION: 5500-3 or standard with a minimum climb of 280' per NM from take-off to 11,000.

GRAND JUNCTION TRANSITION: Do not exceed 200 KIAS until AYEDY WP, cross JNC VORTAC at MEA/MCA for direction of flight.

NOTE: Chart not to scale



DEPARTURE ROUTE DESCRIPTION

TAKE-OFF RUNWAY 11: Climb via 112° course to NOKXI WP.

GRAND JUNCTION TRANSITION (NOKXI1.JNC)

HAQHY TRANSITION (NOKXI1.HAQHY)