

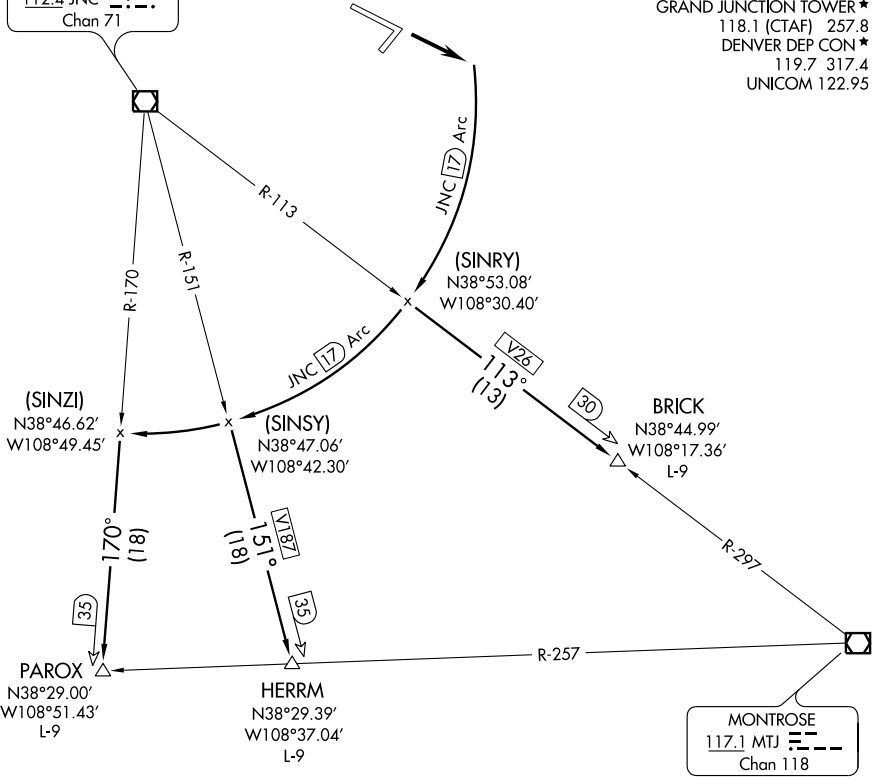
GLADE PARK ONE DEPARTURE

SL-634 (FAA)

GRAND JUNCTION RGNL (GJT)
GRAND JUNCTION, COLORADO

- ATIS 118.55
- CLNC DEL 121.7 257.8
- GND CON 121.7 257.8
- GRAND JUNCTION TOWER* 118.1 (CTAF) 257.8
- DENVER DEP CON* 119.7 317.4
- UNICOM 122.95

GRAND JUNCTION
112.4 JNC
Chan 71



SW-1, 22 OCT 2009 to 19 NOV 2009

SW-1, 22 OCT 2009 to 19 NOV 2009

NOTE: DME required.

NOTE: This SID requires a minimum climb of 220' per NM to 9000'.

NOTE: Chart not to scale.

DEPARTURE ROUTE DESCRIPTION

TAKE-OFF RUNWAY 11: Climb runway heading to intercept JNC VORTAC 17 DME Arc thence clockwise to assigned transition.

BRICK TRANSITION (GDPK1.BRICK): Via JNC VORTAC 17 DME Arc to JNC R-113 thence Southeast-bound to BRICK DME fix.

HERRM TRANSITION (GDPK1.HERRM): Via JNC VORTAC 17 DME Arc to JNC R-151 thence Southeast-bound to HERRM INT.

PAROX TRANSITION (GDPK1.PAROX): Via JNC VORTAC 17 DME Arc to JNC R-170 thence Southeast-bound to PAROX INT.

GLADE PARK ONE DEPARTURE