

RNAV (GPS) RWY 7

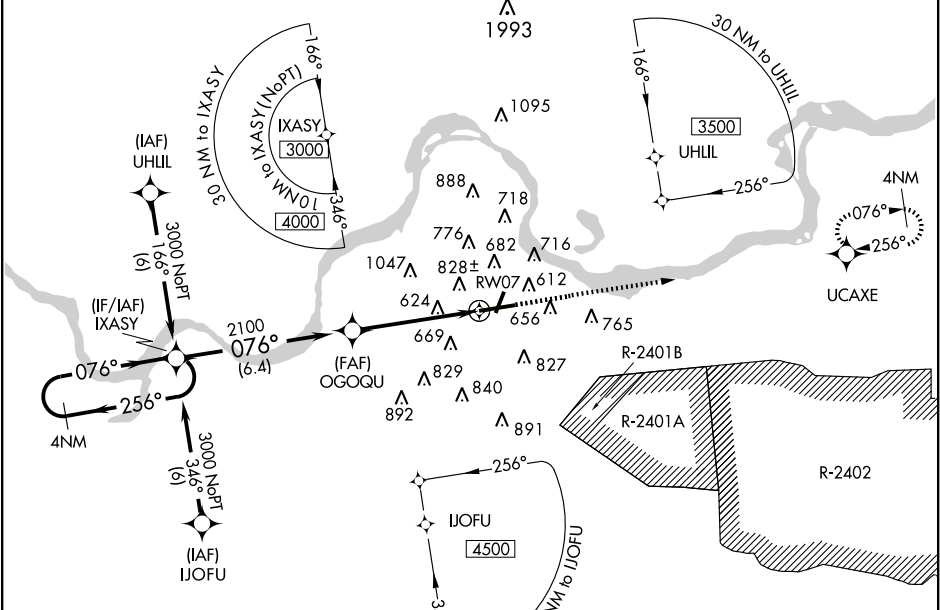
FORT SMITH RGNL (FSM)

APP CRS	Rwy Idg	8000
076°	TDZE	469
	Apt Elev	469

⚠ Circling not authorized NW of Rwy 7 and 19 for Cat E. DME/DME RNP-0.3 NA. Circling to Rwy 1 NA at night. For uncompensated Baro-VNAV systems, LNAV/VNAV NA below -15°C (5°F) or above 54°C (130°F). When ALS inop, increase LNAV/VNAV and LNAV vis Cat E ½ mile. Circling Cat E NA when R-2401B active.

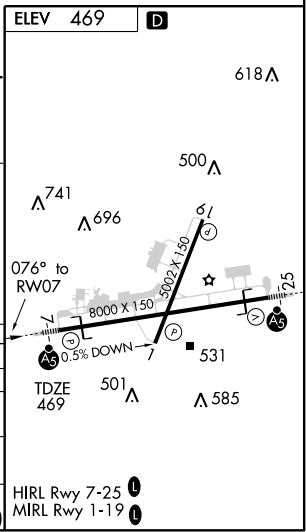
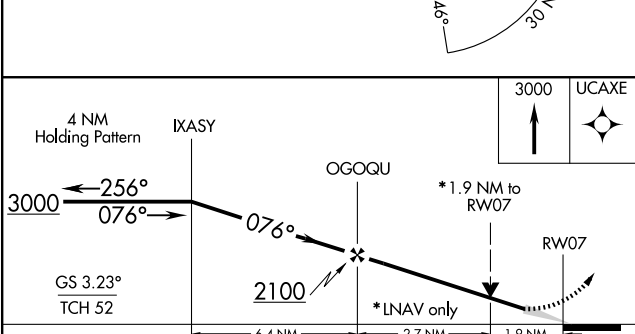
MALSR
 MISSED APPROACH: Climb to 3000 direct UCAXE and hold.

ATIS 126.3	RAZORBACK APP CON * 120.9 343.75	FORT SMITH TOWER * 118.3 (CTAF) 0 323.175	GND CON 121.9 275.8	CLNC DEL 133.85 278.3	UNICOM 122.95
----------------------	--	---	-------------------------------	---------------------------------	-------------------------



SC-1, 22 OCT 2009 to 19 NOV 2009

SC-1, 22 OCT 2009 to 19 NOV 2009



CATEGORY	A	B	C	D	E
GLS DA			NA		
LNAV/VNAV DA	1085-1½ 616 (700-1½)				
LNAV MDA	1140-½ 671 (700-½)	1140-1½ 671 (700-1½)	1140-1¾ 671 (700-1¾)	1140-2 671 (700-2)	1140-2 671 (700-2)
CIRCLING	1140-1 671 (700-1)	1140-2 671 (700-2)	1140-2¼ 671 (700-2¼)	1140-2¼ 671 (700-2¼)	1200-2½ 731 (800-2½)