

RNAV (GPS) RWY 1

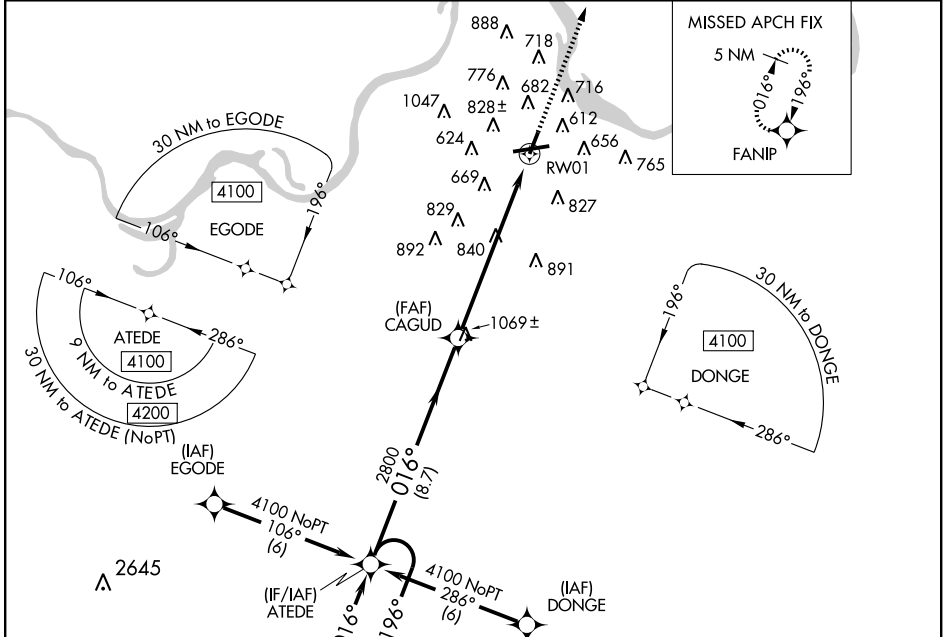
FORT SMITH RGNL (FSM)

APP CRS	Rwy Idg	5002
016°	TDZE	449
	Apt Elev	469

▽ If local altimeter setting not received, use Poteau altimeter setting and increase all MDAs 60 feet. Circling to Rwy 1 NA at night. DME/DME RNP-0.3 NA.
△ ASR Visibility reduction by helicopters NA. Straight-in minimums NA at night.

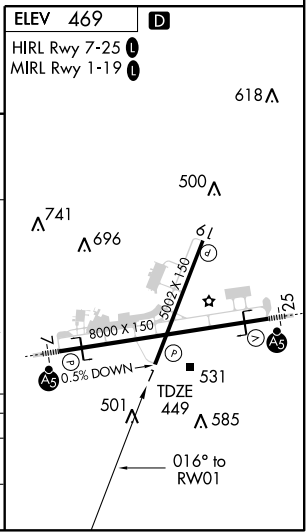
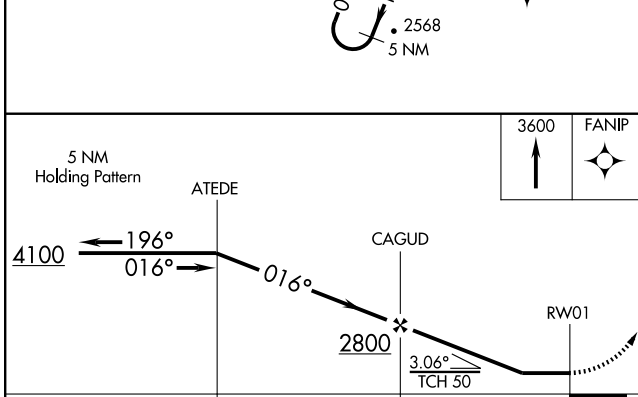
MISSED APPROACH: Climb to 3600 direct FANIP and hold, continue climb-in-hold to 3600.

ATIS 126.3	RAZORBACK APP CON * 120.9 343.75	FORT SMITH TOWER * 118.3 (CTAF) 0 323.175	GND CON 121.9 275.8	CLNC DEL 133.85 278.3	UNICOM 122.95
----------------------	--	---	-------------------------------	---------------------------------	-------------------------



SC-1, 22 OCT 2009 to 19 NOV 2009

SC-1, 22 OCT 2009 to 19 NOV 2009



CATEGORY	A	B	C	D
LNVA MDA	1160-1 711 (700-1)	711 (700-1)	1160-2 711 (700-2)	1160-2¼ 711 (700-2¼)
CIRCLING	1160-1 691 (700-1)	691 (700-1)	1160-2 691 (700-2)	1160-2¼ 691 (700-2¼)