

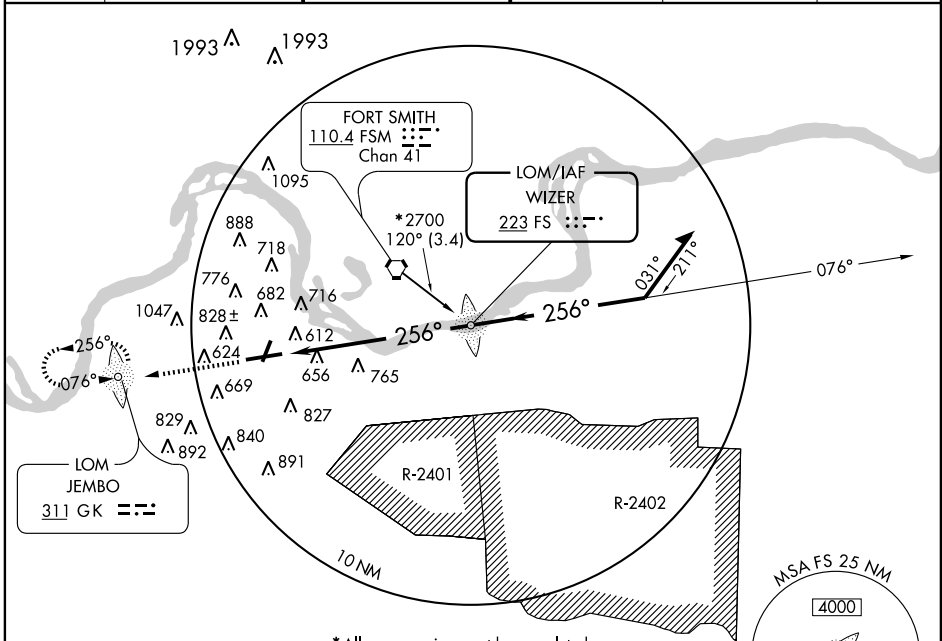
NDB RWY 25

FORT SMITH RGNL (FSM)

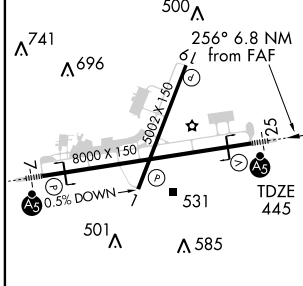
LOM FS 223	APP CRS 256°	Rwy Idg 8000	TDZE 445
		Apt Elev 469	

Circling to Rwy 1 NA at night.	MALSR	MISSED APPROACH: Climb to 2500 direct GK LOM and hold.
--------------------------------	-------	--

ATIS 126.3	RAZORBACK APP CON * 120.9 343.75	FORT SMITH TOWER * 118.3 (CTAF) 0 323.175	GND CON 121.9 275.8	CLNC DEL 133.85 278.3	UNICOM 122.95
----------------------	--	---	-------------------------------	---------------------------------	-------------------------



ELEV 469	D	618 Δ
----------	----------	--------------

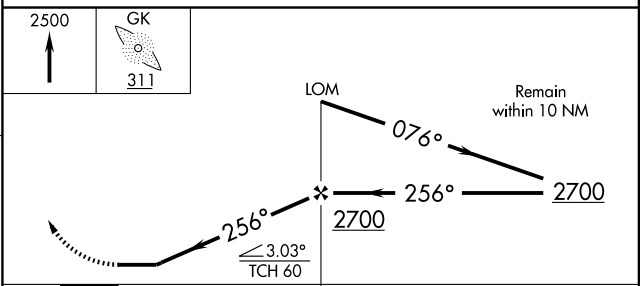


HIRL Rwy 7-25
MIRL Rwy 1-19

FAF to MAP 6.8 NM

Knots	60	90	120	150	180
Min:Sec	6:48	4:32	3:24	2:43	2:16

* All maneuvering must be completed to the north side of approach course. Standard width not provided between non-maneuvering side of approach course and R-2401 and R-2402.



CATEGORY	A	B	C	D
S-25	1140- $\frac{3}{4}$ 695 (700- $\frac{3}{4}$)		1140-1 $\frac{1}{2}$ 695 (700-1 $\frac{1}{2}$)	1140-2 695 (700-2)
CIRCLING	1140-1 671 (700-1)		1140-2 671 (700-2)	1140-2 $\frac{1}{4}$ 671 (700-2 $\frac{1}{4}$)

SC-1, 22 OCT 2009 to 19 NOV 2009

SC-1, 22 OCT 2009 to 19 NOV 2009