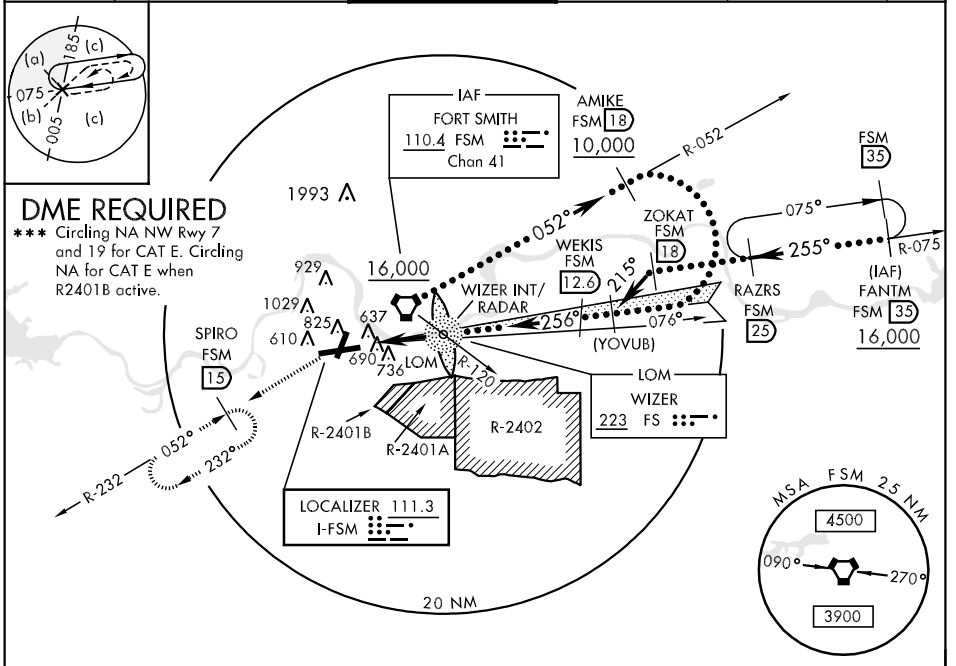


LOC I-FSM <b>111.3</b>	APCH CRS <b>256°</b>	Rwy Idg TDZE Arprt Elev <b>8000</b> <b>446</b> <b>469</b>	JAL-631 [USAF]	FORT SMITH REGIONAL (KFMS)
---------------------------	-------------------------	--	----------------	----------------------------

**▼** \* When ALS inop, increase CAT E RVR to 40, vis to 3/4 mile. **MALSR**  
**\*\*** When ALS inop, increase CAT E vis to 1 1/4 mile.  
**▲** NA When control tower closed.

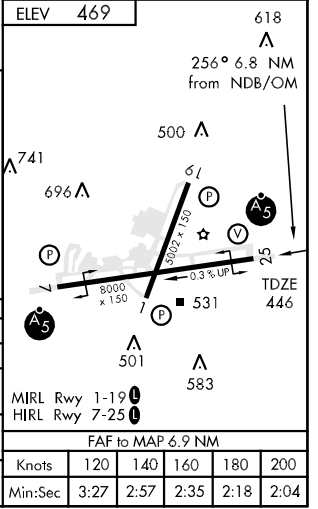
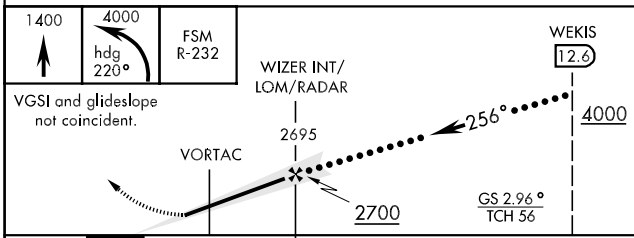
ATIS ★ <b>126.3</b>	RAZORBACK APP CON <b>120.9 343.75</b>	FORT SMITH TOWER ★ <b>118.3 (CTAF) 323.175</b>	GND CON <b>121.9 275.8</b>	CLNC DEL <b>133.85 278.3</b>	ASR
------------------------	--	---	-------------------------------	---------------------------------	-----



SC-1, 22 OCT 2009 to 19 NOV 2009

SC-1, 22 OCT 2009 to 19 NOV 2009

EMERG SAFE ALT 100 NM 4500 FROM FSM VORTAC



CATEGORY	C	D	E
S-ILS *	646/24 200 (200-1/2)		
S-LOC **	960/50 514 (600-1)	960/60 514 (600-1 1/4)	
CIRCLING ***	1140-2 671 (700-2)	1140-2 1/4 671 (700-2 1/4)	1200-2 1/2 731 (800-2 1/2)
S-ASR 25	1040/50 594 (600-1)	1040/60 594 (600-1 1/4)	1040-1 1/2 594 (600-1 1/2)