

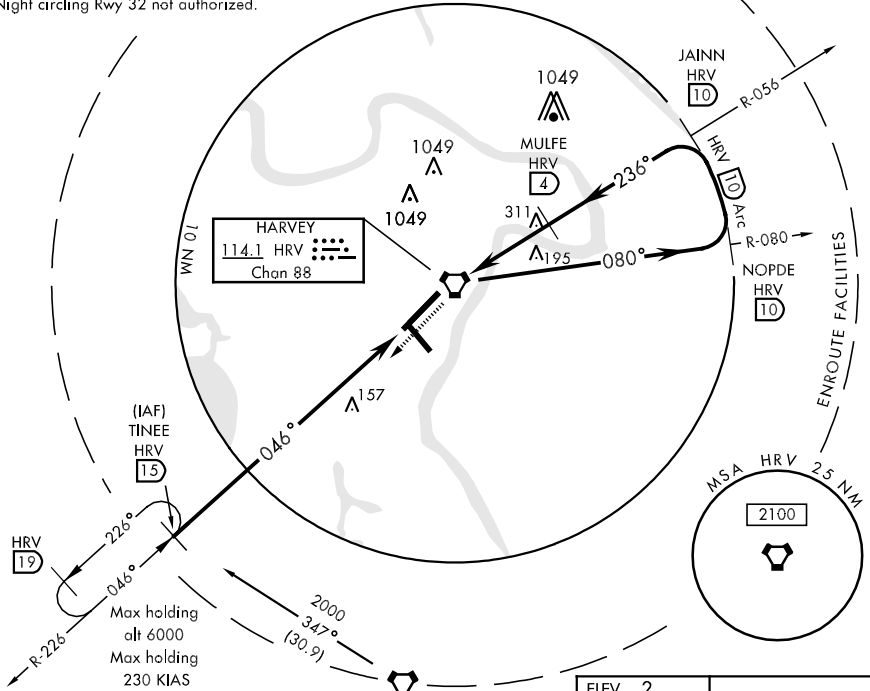
NEW ORLEANS, LOUISIANA

VOR/DME or TACAN RWY 22

NEW ORLEANS NAS JRB
(ALVIN CALLENDER FLD) (KNBG)

VORTAC HRV 114.1 Chan 88	APCH CRS 236°	Rwy Idg 9999 TDZE Arpt Elev -1 2	AL-630 [USN]
* When ALS inop, increase vis CAT AB to 1 mile, CAT C to 1 1/4 miles, CAT D to 1 1/2 miles. ** When ALS inop, increase vis CAT CD to 1 mile.			SALS
MISSED APPROACH: Climb to 2000 via R-226 to TINEE and hold.			
ATIS ★ 276.2	NEW ORLEANS APP CON 123.85 256.9	NAVY NEW ORLEANS TOWER ★ 123.8 340.2	GND CON 121.6 382.8
		ASR/PAR	

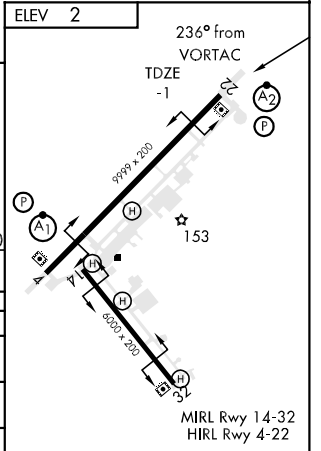
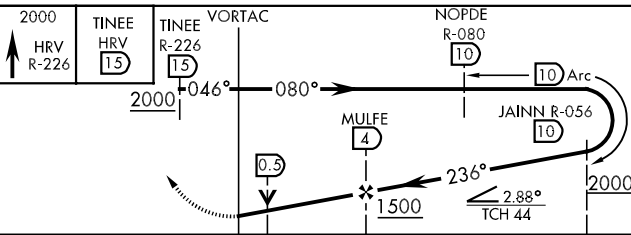
*** Night circling Rwy 32 not authorized.



SC-4, 22 OCT 2009 to 19 NOV 2009

SC-4, 22 OCT 2009 to 19 NOV 2009

EMERG SAFE ALT 100 NM 3100



CATEGORY	A	B	C	D
S-22 *	460-3/4	461 (500-3/4)	460-1 461 (500-1)	460-1 1/4 461 (500-1 1/4)
CIRCLING ***	480-1	478 (500-1)	500-1 1/2 498 (500-1 1/2)	560-2 558 (600-2)
S-PAR 22 **	249-3/4	250	(300-3/4)	GS 3.0°

NEW ORLEANS, LOUISIANA
Orig 09239

29°50'N-90°02'W

NEW ORLEANS NAS JRB (KNBG)
(ALVIN CALLENDER FLD)

VOR/DME or TACAN RWY 22