

NEW ORLEANS, LOUISIANA

RNAV (GPS) RWY 22

NEW ORLEANS NAS JRB
(ALVIN CALLENDER FLD) (KNBG)

WAAS Chan 60141 W22A	APCH CRS 224°	Rwy Idg 9999 TDZE -1 Arprt Elev 2
--	-------------------------	--

AL-630 [USN]

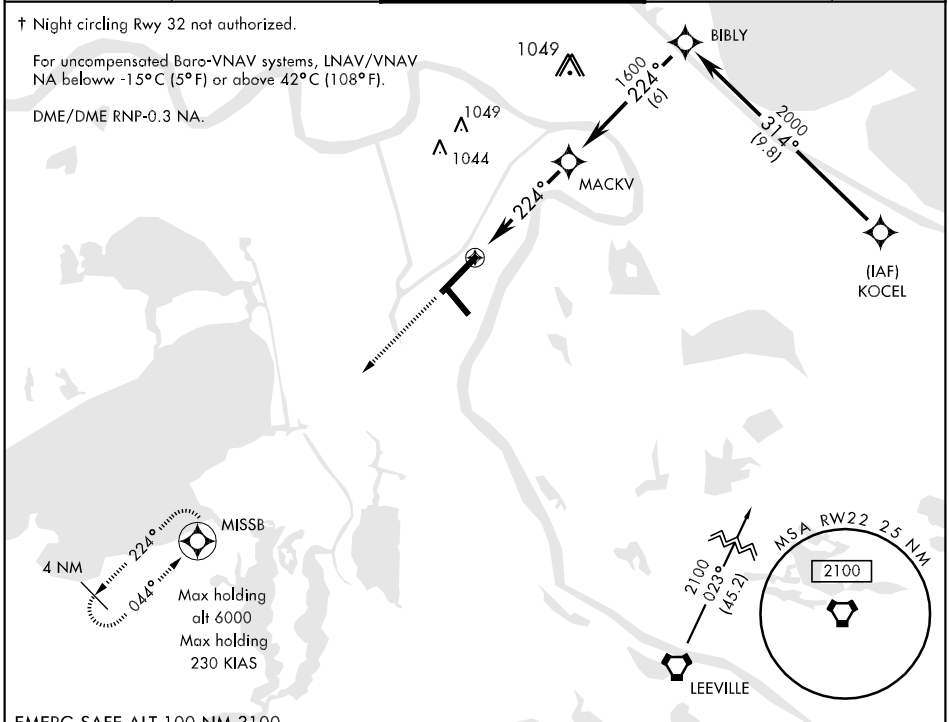
<p>▼ ** When ALS inop, increase vis CAT AB to ¾ mile. *** When ALS inop, increase vis CAT ABCD to 1 ¼ miles. *** When ALS inop, increase vis CAT AB to 1 mile, CAT C to 1 ¼ miles, CAT D to 1 ½ miles.</p>	<p>SALS (A2) </p>	<p>MISSED APPROACH: Climb to 2000 direct MISSB and hold.</p>
--	-----------------------	--

<p>ATIS ★ 276.2</p>	<p>NEW ORLEANS APP CON 123.85 256.9</p>	<p>NAVY NEW ORLEANS TOWER ★ 123.8 340.2</p>	<p>GND CON 121.6 382.8</p>	<p>ASR/PAR</p>
--------------------------------	--	--	---------------------------------------	----------------

† Night circling Rwy 32 not authorized.

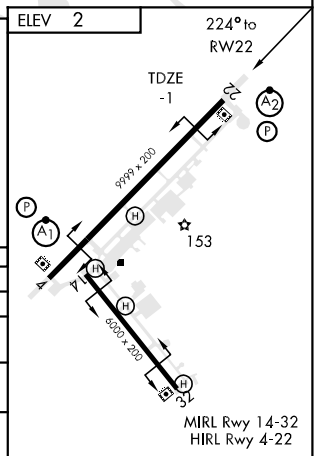
For uncompensated Baro-VNAV systems, LNAV/VNAV NA below -15°C (5°F) or above 42°C (108°F).

DME/DME RNP-0.3 NA.



EMERG SAFE ALT 100 NM 3100

2000	MISSB	LNAV only †			
↑		BIBLY	KOCEL		
1.25 NM to RWY 22 †	MULFE	224°	314°	2000	2000
RWY 22	1600	3.00° TCH 44			
4.8 NM					
CATEGORY	A	B	C	D	
LPV DA *	199-½	200 (200-½)	199-¾	200 (200-¾)	
LNAV/VNA DA **	340-1		341	(400-1)	
*** LNAV MDA	440-¾	441 (500-¾)	440-1 441 (500-1)	440-1 ¼ 441 (500-1 ¼)	
CIRCLING †	480-1 ¼	478 (500-1 ¼)	500-1 ½ 498 (500-1 ½)	560-2 558 (600-2)	



NEW ORLEANS, LOUISIANA
09239

29° 50'N-90° 02'W

NEW ORLEANS NAS JRB (KNBG)
(ALVIN CALLENDER FLD)
RNAV (GPS) RWY 22

SC-4, 22 OCT 2009 to 19 NOV 2009

SC-4, 22 OCT 2009 to 19 NOV 2009