

LOC I-NGB 109.5	APCH CRS 044°	Rwy Idg TDZE Arprt Elev 9999 -1 2	AL-630 [UNSN]
▼ ** When ALS inop, increase vis CAT ABCD to ¾ mile. *** When ALS inop, increase vis CAT ABCD to 1 mile. **** When ALS inop, increase vis CAT ABCD to 1¼ miles.		ALS-1	MISSED APPROACH: Climb to 500, then climbing right turn to 2000 direct FIRIB, then climb to 2100 via track 156° to SULPA and hold.

ATIS ★ 276.2	NEW ORLEANS APP CON 123.85 256.9	NAVY NEW ORLEANS TOWER ★ 123.8 340.2	GND CON 121.6 382.8	ASR/PAR
------------------------	--	--	-------------------------------	---------

† Night circling Rwy 32 not authorized.

For uncompensated Baro-VNAV systems, LNAV/VNAV NA below -15°C (5°F) or above 42°C (108°F).

DME/DME RNP-0.3 NA.

GPS required for ILS approach.

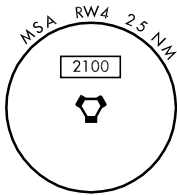
LOCALIZER 109.5
I-NGB

2000



(IAF)
OLEDD

OLEDD IAF: Procedure NA for westbound V198-552 arrivals at OLEDD.



NoPT 2000 100° (15.8)

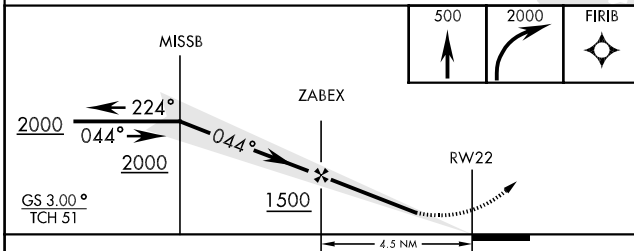
Max holding alt 6000
Max holding 230 KIAS

NoPT 2000 346° (110.6)

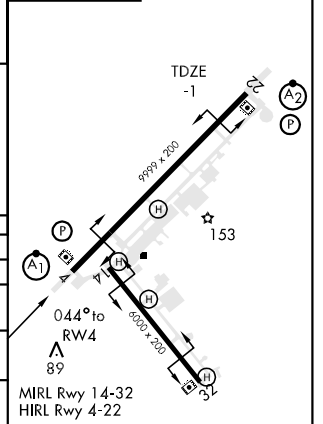
(IAF) GOING

GOING IAF: Procedure NA for southbound V9-543 arrivals at GOING.

EMERG SAFE ALT 100 NM 3100



ELEV 2



CATEGORY	A	B	C	D
S-ILS 4 *	199-½	200	(200-½)	
LNAV MDA **	340-½	341	(400-½)	
LNAV/VNAV ***	340-¾	341	(400-¾)	
CIRCLING †	480-1¼	478 (500-1¼)	500-1½ 498 (500-1½)	560-2 558 (600-2)

SC-4, 22 OCT 2009 to 19 NOV 2009

SC-4, 22 OCT 2009 to 19 NOV 2009