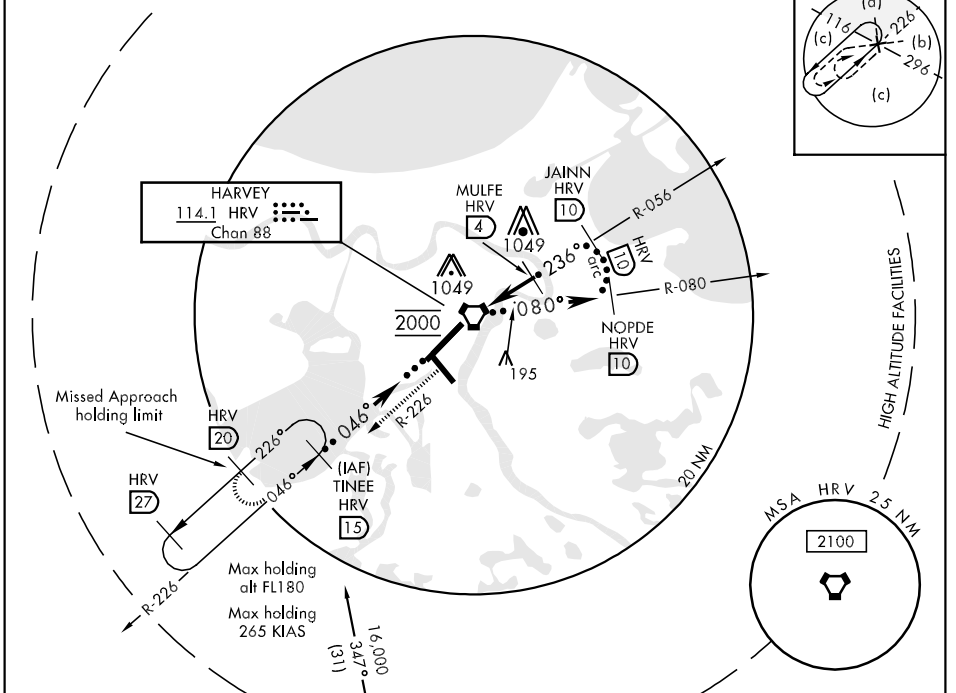
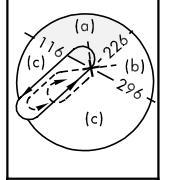


VORTAC HRV **114.1** APCH CRS **236°** Rwy Idg **9999** JAL-630 [USN]  
 Chan **88** TDZE **-1** Arpt Elev **2** NEW ORLEANS NAS JRB (ALVIN CALLENDER FLD) (KNBG)

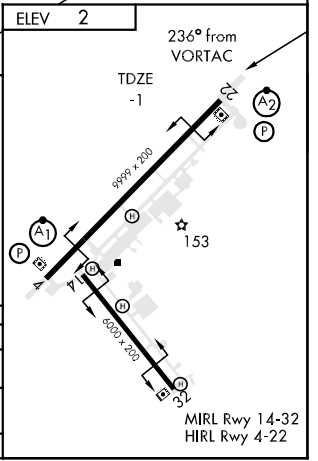
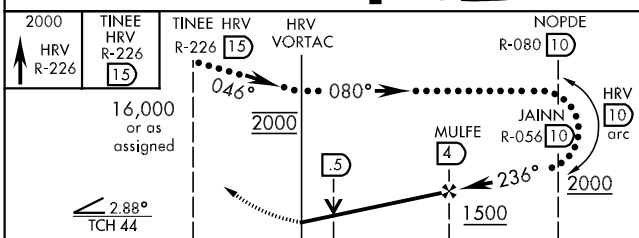
▼ \* When ALS inop, increase vis CAT C to 1¼ miles, CAT D to 1½ miles, CAT E to 1¾ miles. SALSF MISSED APPROACH: Climb to 2000 via R-226 to TINEE and hold.  
 \*\* Night circling Rwy 32 NA. CAT E circling not authorized NW of Rwy 4-22. (A2) TINEE

ATIS ★ **276.2** NEW ORLEANS APP CON **123.85 256.9** NAVY NEW ORLEANS TOWER ★ **123.8 340.2** GND CON **121.6 382.8** ASR/PAR

\*\*\*When ALS inop, increase vis CAT CDE to ½ mile.



EMERG SAFE ALT 100 NM 3100 LEEVILLE ELEV 2



CATEGORY	C	D	E
S-22 *	460-1 461 (500-1)	460-1¼ 461 (500-1¼)	460-1½ 461 (500-1½)
CIRCLING **	500-1½ 498 (500-1½)	560-2 558 (600-2)	640-2½ 638 (700-2½)
S-PAR-22 ***	249-¾	250 (300-¾)	GS 3.0°

SC-4, 22 OCT 2009 to 19 NOV 2009

SC-4, 22 OCT 2009 to 19 NOV 2009