

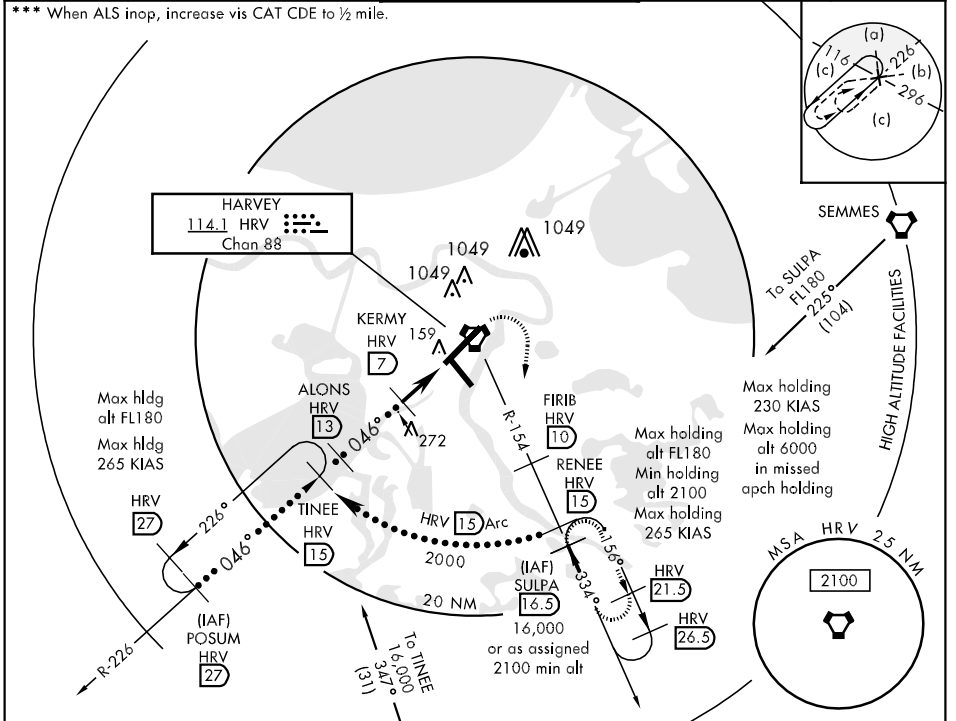
VORTAC HRV <b>114.1</b> Chan <b>88</b>	APCH CRS <b>046°</b>	Rwy Idg TDZE Arpt Elev <b>9999</b> <b>-1</b> <b>2</b>	JAL-630 [USN] NEW ORLEANS NAS JRB (ALVIN CALLENDER FLD) (KNBG)
--	-------------------------	--	---

\* When ALS inop, increase vis CAT CD to 1¼ miles, CAT E to 1½ miles.  
 \*\* Night circling Rwy 32 NA. CAT E circling not authorized NW of Rwy 4-22.
 

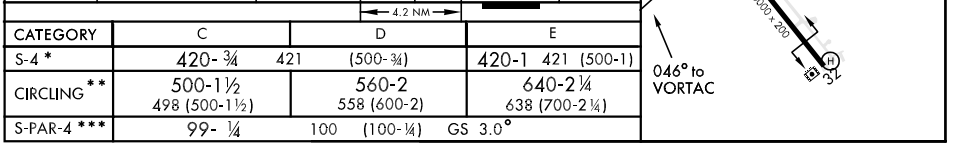
 ALSF-1  

 MISSED APPROACH: Climb direct HRV VORTAC, then climbing right turn to 2000, intercept R-154 to FIRIB, then climb to 2100 to SULPA and hold.

ATIS ★ <b>276.2</b>	NEW ORLEANS APP CON <b>123.85 256.9</b>	NAVY NEW ORLEANS TOWER ★ <b>123.8 340.2</b>	GND CON <b>121.6 382.8</b>	ASR/PAR
------------------------	--	--	-------------------------------	---------



CATEGORY	C	D	E
S-4 *	420-¾ 421	(500-¾)	420-1 421 (500-1)
CIRCLING **	500-1½ 498 (500-1½)	560-2 558 (600-2)	640-2¼ 638 (700-2¼)
S-PAR-4 ***	99-¼	100 (100-¼)	GS 3.0°



SC-4, 22 OCT 2009 to 19 NOV 2009

SC-4, 22 OCT 2009 to 19 NOV 2009