

RNAV (GPS) RWY 4

PADUCAH/BARKLEY RGNL (PAH)

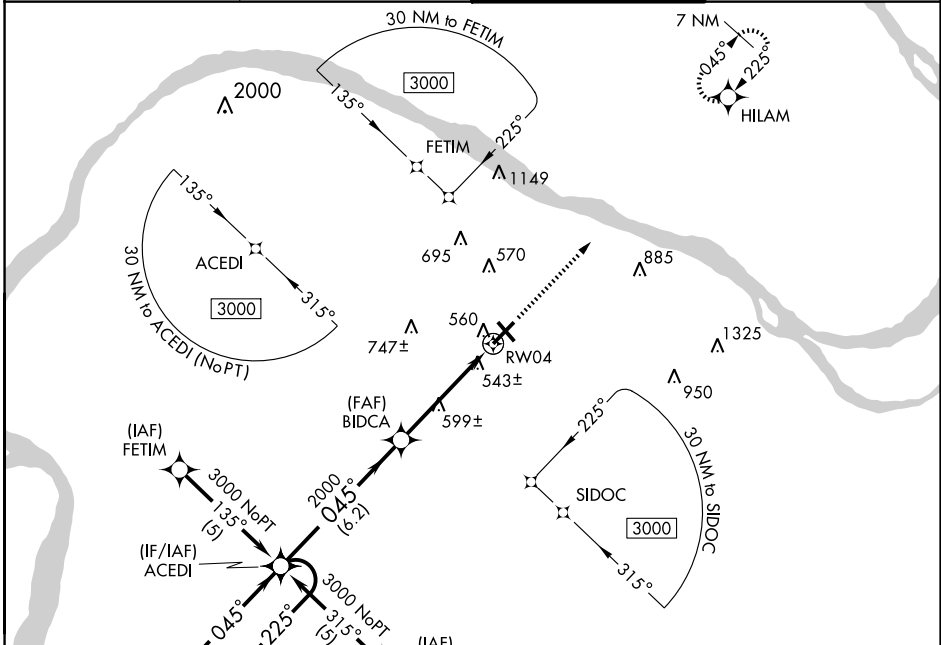
WAAS CH 93701 W04A	APP CRS 045°	Rwy Idg 6499 TDZE 410 Apt Elev 410
--	------------------------	---

▼ DME/DME RNP-0.3 NA. If local altimeter setting not received, use Mayfield altimeter setting and increase all DAs 62 feet and all MDAs 80 feet. For uncompensated Baro-VNAV systems, ▲ LNAV/VNAV NA below -15°C (5°F) or above 48°C (118°F). VDP and Baro-VNAV NA when using Mayfield altimeter setting. For inoperative MALSR, increase LPV visibility to 1/4.



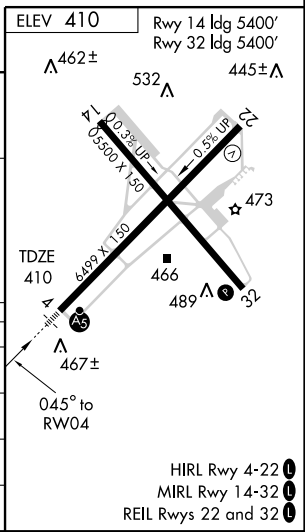
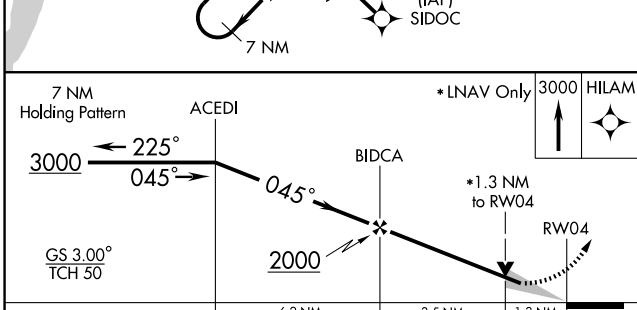
MISSED APPROACH:
Climb to 3000 direct
HILAM and hold.

ASOS 118.375	MEMPHIS CENTER 133.65 292.15	PADUCAH TOWER ★ 119.6 (CTAF) 0 306.9	GND CON 121.7 306.9
------------------------	--	--	-------------------------------



SE-1, 22 OCT 2009 to 19 NOV 2009

SE-1, 22 OCT 2009 to 19 NOV 2009



CATEGORY	A	B	C	D
LPV DA	756-3/4		346 (400-3/4)	
LNAV/DA VNAV	884-1/4		474 (500-1/4)	
LNAV MDA	860-1/2	450 (500-1/2)	860-3/4 450 (500-3/4)	860-1 450 (500-1)
CIRCLING	900-13/4		490 (500-13/4)	
			960-2 550 (600-2)	

HIRL Rwy 4-22
MIRL Rwy 14-32
REIL Rwy 22 and 32