

RNAV (GPS) RWY 22

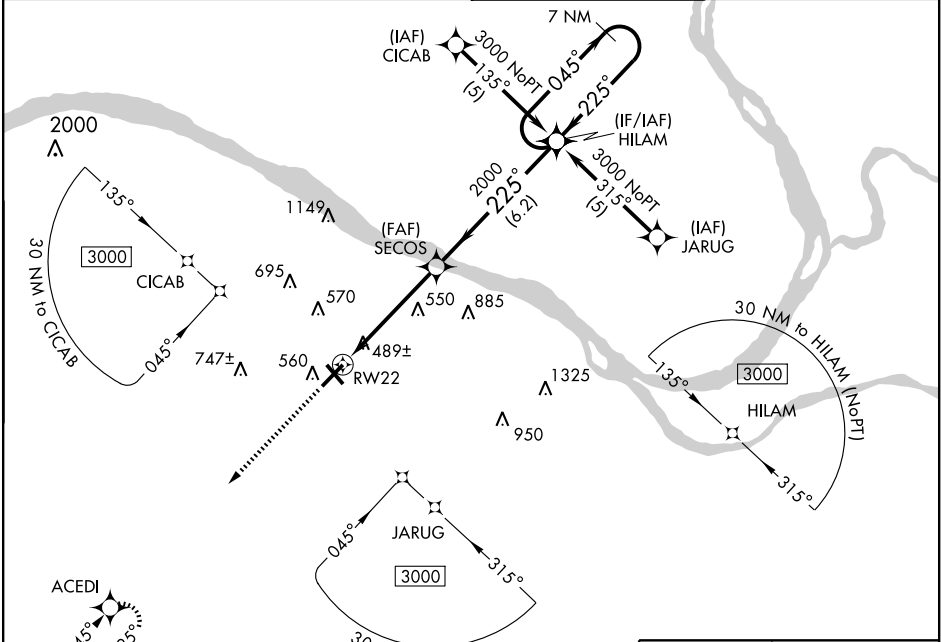
PADUCAH/BARKLEY RGNL (PAH)

| | | |
|--|------------------------|---|
| WAAS CH 49001 W22A | APP CRS 225° | Rwy Idg 6499 TDZE 401 Apt Elev 410 |
|--|------------------------|---|

▼ DME/DME RNP-0.3 NA. If local altimeter setting not received, use Mayfield altimeter setting and increase all DAs 62 feet and all MDAs 80 feet. For uncompensated Baro-VNAV systems, ▲ LNAV/VNAV NA below -15°C (5°F) or above 48°C (118°F). Baro-VNAV NA with Mayfield altimeter setting. Visibility reduction by helicopters NA.

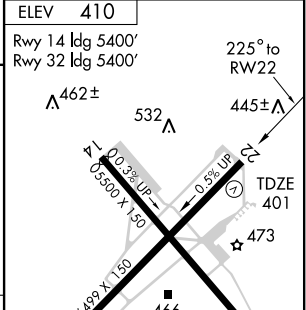
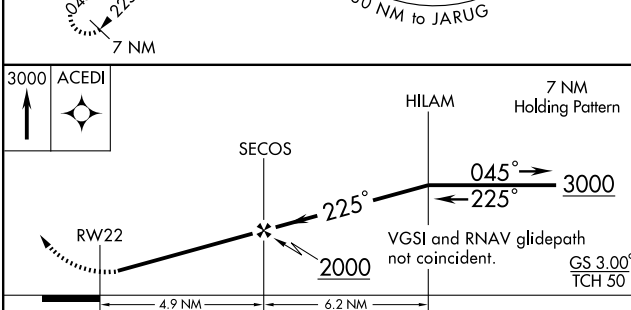
MISSED APPROACH: Climb to 3000 direct ACEDI and hold.

| | | | |
|------------------------|--|---|-------------------------------|
| ASOS 118.375 | MEMPHIS CENTER 133.65 292.15 | PADUCAH TOWER ★ 119.6(CTAF) 306.9 | GND CON 121.7 306.9 |
|------------------------|--|---|-------------------------------|



SE-1, 22 OCT 2009 to 19 NOV 2009

SE-1, 22 OCT 2009 to 19 NOV 2009



| CATEGORY | A | B | C | D |
|--------------|---------------------|--------------|---|------------------------|
| LPV DA | 677-1 276 (300-1) | | | |
| LNAV/DA VNAV | 789-1½ 388 (400-1½) | | | |
| LNAV MDA | 800-1 | 399 (400-1) | | 800-1¼ 399 (400-1¼) |
| CIRCLING | 900-1½ | 490 (500-1½) | | 960-2 550 (600-2) |

| |
|--------------------|
| ELEV 410 |
| Rwy 14 ldg 5400' |
| Rwy 32 ldg 5400' |
| TDZE 401 |
| HIRL Rwy 4-22 |
| MIRL Rwy 14-32 |
| REIL Rws 22 and 32 |