

# RNAV (GPS) RWY 18

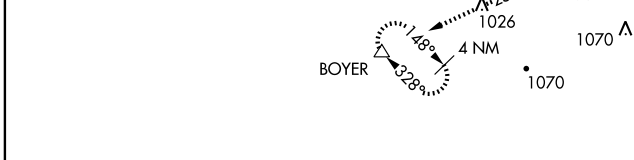
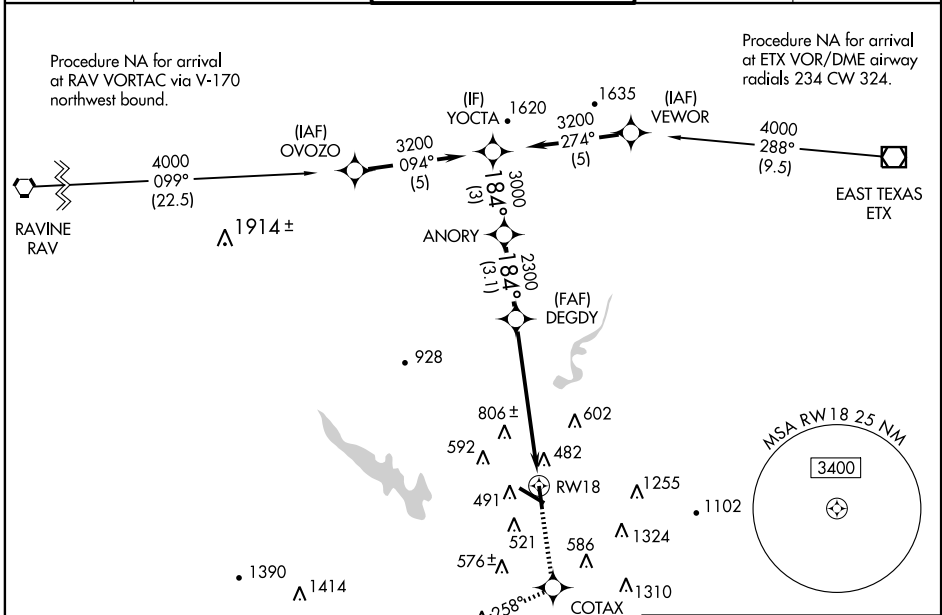
READING RGNL / CARL A SPAATZ FIELD (RDG)

APP CRS <b>184°</b>	Rwy Idg <b>5151</b>
	TDZE <b>319</b>
	Apt Elev <b>344</b>

**⚠** DME/DME RNP-0.3 NA. Visibility reduction by helicopters NA.  
**⚠** When local altimeter setting not received, use Harrisburg Intl altimeter setting and increase all MDA 100 feet, increase LNAV Cat B visibility ¼ mile, Cats C and D visibility ½ mile. Increase Circling Cats B and D visibility ¼ mile, Cat C visibility ½ mile.

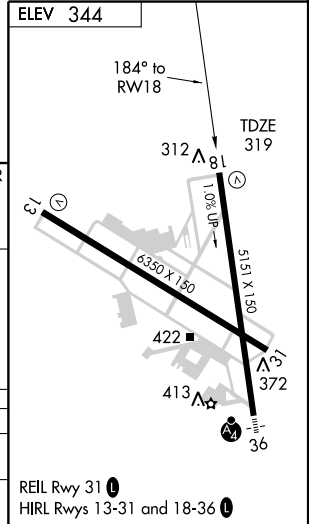
**MISSED APPROACH:** Climb to 3000 direct COTAX and via 258° track to BOYER and hold, continue climb-in-hold to 3000.

ATIS <b>127.1</b>	READING APP CON ★ <b>125.15 257.9</b>	READING TOWER ★ <b>119.9</b> (CTAF) <b>0 288.3</b>	GND CON <b>121.9</b>	UNICOM <b>122.95</b>
----------------------	--	---	-------------------------	-------------------------



	YOCTA	ANORY	DEGDY	RWY 18
Procedure Turn NA	3200	3000	2300	
	3 NM	3.1 NM	6 NM	

CATEGORY	A	B	C	D
LNAV MDA	980-1	661 (700-1)	980-1¾ 661 (700-1¾)	980-2 661 (700-2)
CIRCLING	1000-1	656 (700-1)	1000-1¾ 656 (700-1¾)	1120-2½ 776 (800-2½)



# RNAV (GPS) RWY 18

NE-4, 22 OCT 2009 to 19 NOV 2009

NE-4, 22 OCT 2009 to 19 NOV 2009