

ILS or LOC RWY 36

READING RGNL / CARLA SPAATZ FIELD (RDG)

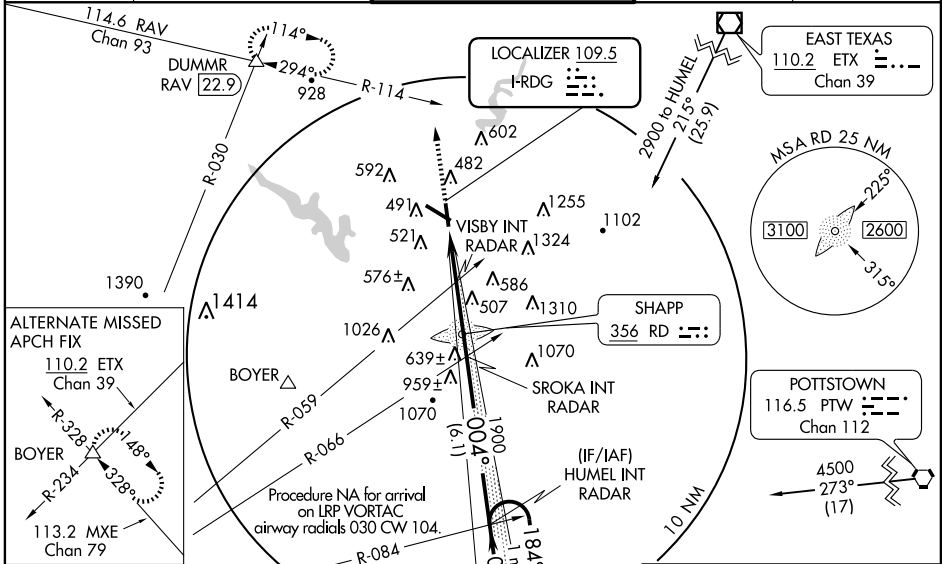
LOC I-RDG 109.5	APP CRS 004°	Rwy Idg 5151 TDZE 343 Apt Elev 344
---------------------------	------------------------	---

Straight-in minimums NA at night. Inoperative table does not apply. Visibility reduction by helicopters NA.
 When local altimeter setting not received, use Harrisburg Intl altimeter setting and increase S-ILS 36 DA to 686 feet and all visibilities 1/4 mile. Increase all MDA 100 feet and S-LOC 36 Cats C and D visibility 1/4 mile, and Circling Cat B and D visibility 1/4 mile, Cat C visibility 1/2 mile.

MALSF

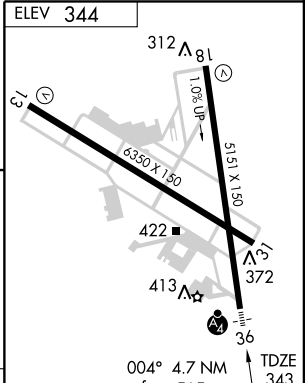
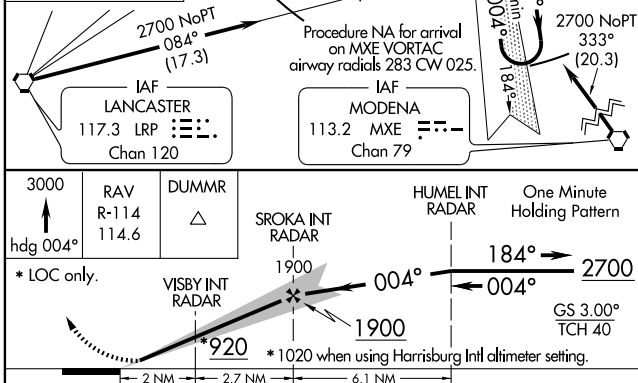
 MISSED APPROACH: Climb to 3000 via heading 004° and via RAV VORTAC R-114 to DUMMR INT/RAV 22.9 DME and hold, continue climb-in-hold to 3000.

ATIS 127.1	READING APP CON * 125.15 257.9	READING TOWER * 119.9 (CTAF) 0 288.3	GND CON 121.9	UNICOM 122.95
----------------------	--	--	-------------------------	-------------------------



NE-4, 22 OCT 2009 to 19 NOV 2009

NE-4, 22 OCT 2009 to 19 NOV 2009



CATEGORY	A	B	C	D
S-ILS 36		593-1	250 (300-1)	
S-LOC 36	820-1	477 (500-1)	820-1 1/4 477 (500-1 1/4)	820-1 1/2 477 (500-1 1/2)
CIRCLING	1000-1	656 (700-1)	1000-1 3/4 656 (700-1 3/4)	1120-2 1/2 776 (800-2 1/2)

REIL Rwy 31
HIRL Rws 13-31 and 18-36
FAF to MAP 4.7 NM

Knots	60	90	120	150	180
Min:Sec	4:42	3:08	2:21	1:53	1:34