

VOR RWY 23

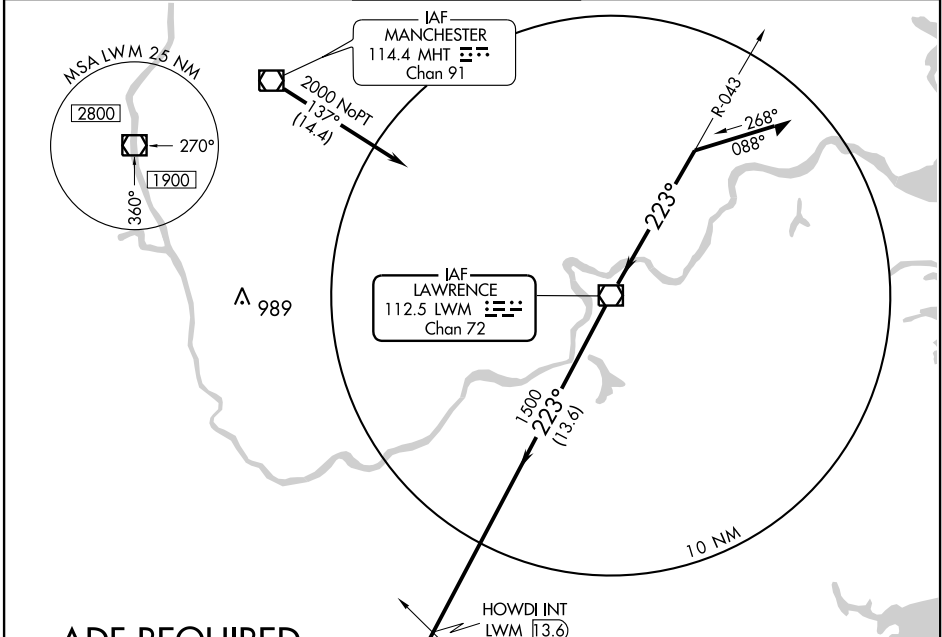
BEDFORD/LAURENCE G. HANSCOM FIELD (BED)

VOR/DME LWM 112.5 Chan 72	APP CRS 223°	Rwy Idg 5106 TDZE 129 Apt Elev 133
---	------------------------	---



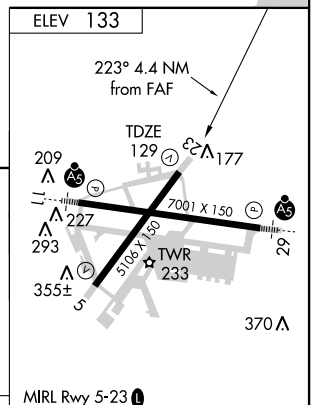
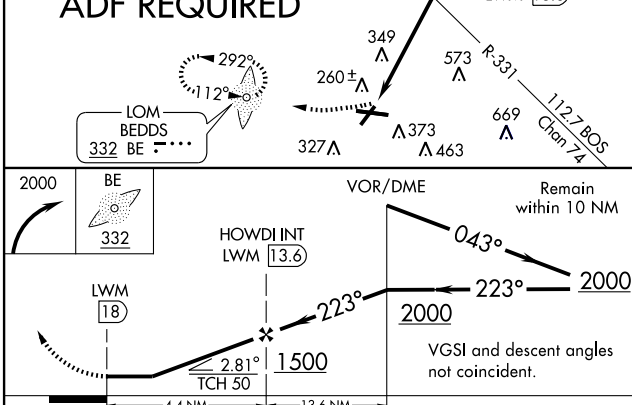
MISSED APPROACH: Climbing right turn to 2000 direct BE LOM and hold.

ATIS 124.6	BOSTON APP CON 124.4 279.6	HANSCOM TOWER* 118.5 (CTAF) 236.6	GND CON 121.7	CLNC DEL 121.85	UNICOM 122.95
----------------------	--------------------------------------	--	-------------------------	---------------------------	-------------------------



NE-1, 22 OCT 2009 to 19 NOV 2009

NE-1, 22 OCT 2009 to 19 NOV 2009



CATEGORY	A	B	C	D
S-23	680-1	551 (600-1)	680-1½ 551 (600-1½)	680-1¾ 551 (600-1¾)
CIRCLING	700-1 567 (600-1)	720-1 587 (600-1)	720-1½ 587 (600-1½)	780-2 647 (700-2)

MIRL Rwy 5-23
HIRL Rwy 11-29
REIL Rws 5 and 23

FAF to MAP 4.4 NM

Knots	60	90	120	150	180
Min:Sec	4:24	2:56	2:12	1:46	1:28