

# RNAV (GPS) RWY 11

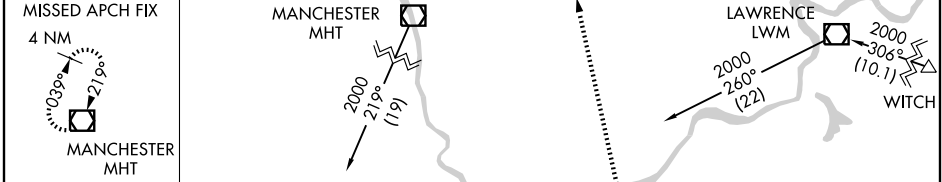
BEDFORD / LAURENCE G. HANSCOM FIELD (BED)

WAAS CH <b>87000</b> <b>W11A</b>	APP CRS <b>113°</b>	Rwy Idg TDZE Apt Elev	<b>7001</b> <b>133</b> <b>133</b>
--	------------------------	-----------------------------	---

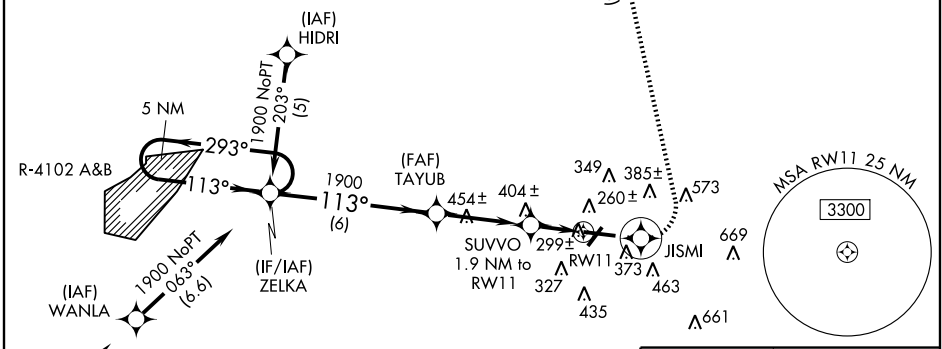
**▼** If local altimeter setting not received, use Boston altimeter setting and increase all DAs/MDAs 60 feet. For uncompensated Baro-VNAV systems, LNAV-VNAV NA below -15°C (5°F) or above 48°C (119°F). For inoperative MALS, increase LPV all Cats visibility to RVR 6000. Inoperative table does not apply to LNAV Cats A and B. Baro-VNAV NA when using Boston altimeter setting. Visibility reduction by helicopters NA. DME/DME RNP-0.3 NA.

**MALS**  
**A5**  
MISSED APPROACH: Climb to 2000 direct JISMI and left turn via 004° track to MHT VOR/DME and hold.

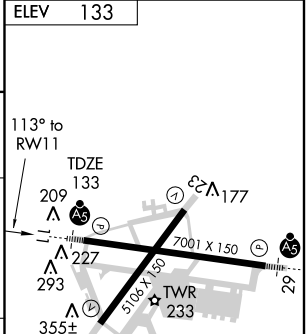
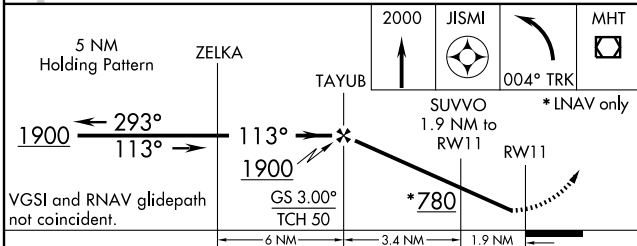
ATIS <b>124.6</b>	BOSTON APP CON <b>124.4 279.6</b>	HANSCOM TOWER * <b>118.5 (CTAF) 236.6</b>	GND CON <b>121.7</b>	CLNC DEL <b>121.85</b>	UNICOM <b>122.95</b>
----------------------	--------------------------------------	--	-------------------------	---------------------------	-------------------------



Procedure NA for arrivals at MHT VOR/DME via V106 E bnd.



ELEV	133
------	-----



CATEGORY	A	B	C	D
LPV DA		479/50	346 (400-1)	
LNAV/VNAV DA		576/50	443 (500-1)	
LNAV MDA	660/50	527 (600-1)		660/60 527 (600-1¼)
CIRCLING	680-1	547 (600-1)	700 - 1½ 567 (600-1½)	780 - 2 647 (700-2)

MIRL Rwy 5-23  
HIRL Rwy 11-29  
REIL Rwy 5 and 23

NE-1, 22 OCT 2009 to 19 NOV 2009

NE-1, 22 OCT 2009 to 19 NOV 2009