

NDB RWY 29

BEDFORD/LAURENCE G. HANSCOM FIELD (BED)

NDB SKR 251	APP CRS 297°	Rwy Idg 7001
		TDZE 128
		Apt Elev 133

NA When local altimeter setting not received, use Boston altimeter setting and increase all MDA 60 feet; increase S-29 Cat C and D and Circling Cat C and D visibilities ¼ mile.

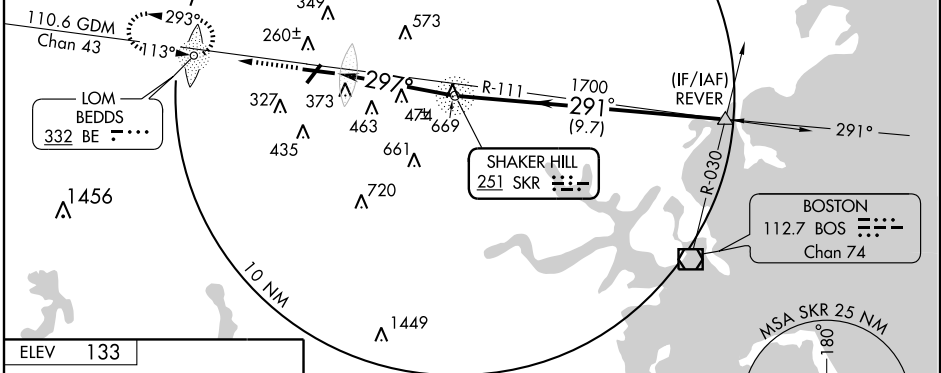


MISSED APPROACH: Climb to 2000 direct BE LOM and hold.

ATIS 124.6	BOSTON APP CON 124.4 279.6	HANSCOM TOWER* 118.5 (CTAF) 0 236.6	GND CON 121.7	CLNC DEL 121.85	UNICOM 122.95
----------------------	--------------------------------------	---	-------------------------	---------------------------	-------------------------

ALTERNATE MISSED APCH FIX

SHAKER HILL SKR 251

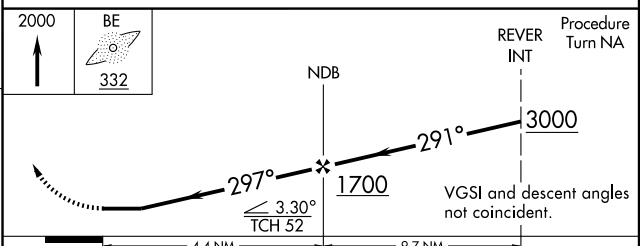


ELEV 133

MIRL Rwy 5-23
HIRL Rwy 11-29
REIL Rwys 5 and 23

FAF to MAP 4.4 NM

Knots	60	90	120	150	180
Min:Sec	4:24	2:56	2:12	1:46	1:28



CATEGORY	A	B	C	D
S-29	780-¾ 652 (700-¾)		780-1¼ 652 (700-1¼)	780-1¾ 652 (700-1¾)
CIRCLING	780-1 647 (700-1)		780-1¾ 647 (700-1¾)	800-2 667 (700-2)

NDB RWY 29

NE-1, 22 OCT 2009 to 19 NOV 2009

NE-1, 22 OCT 2009 to 19 NOV 2009