

ILS or LOC RWY 11

BEDFORD/LAURENCE G. HANSCOM FIELD (BED)

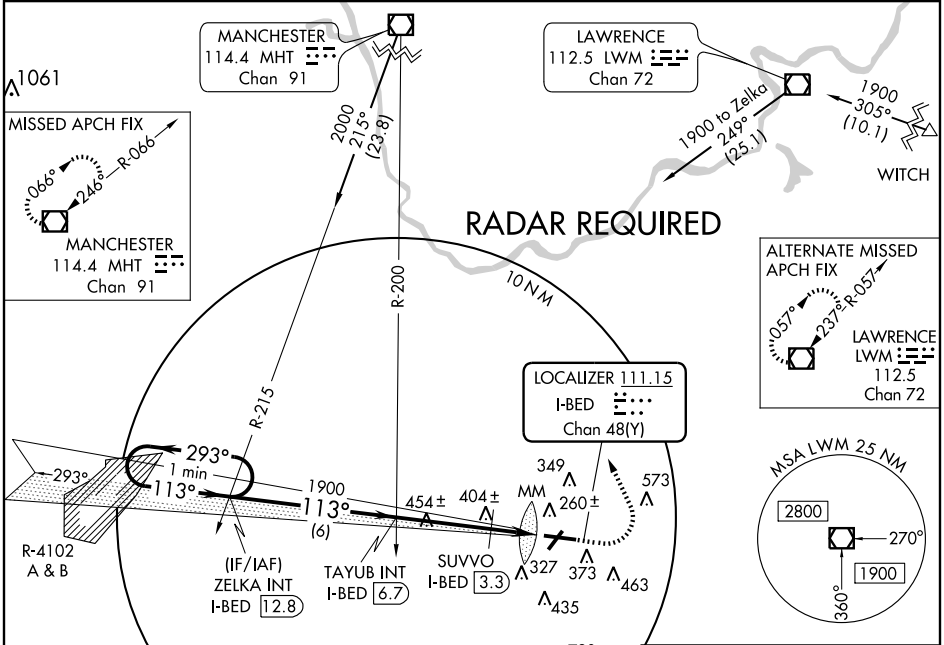
LOC/DME I-BED 111.15 Chan 48 (Y)	APP CRS 113°	Rwy Idg 7001 TDZE 133 Apt Elev 133
--	------------------------	---

▼ If local altimeter setting not received, use Boston altimeter setting and increase all DAs/MDAs 60 feet. Inoperative table does not apply to S-ILS 11 all Cats and S-LOC 11 Cats A and B. Visibility reduction by helicopters NA.



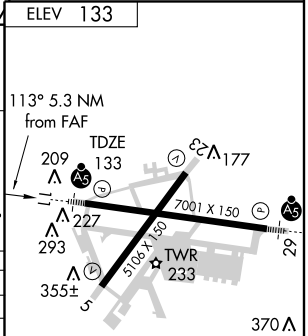
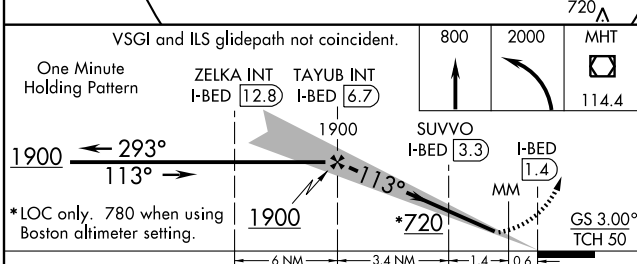
MISSED APPROACH: Climb to 800, then climbing left turn to 2000 direct MHT VOR/DME and hold.

ATIS 124.6	BOSTON APP CON 124.4 279.6	HANSCOM TOWER ★ 118.5 (CTAF) 236.6	GND CON 121.7	CLNC DEL 121.85	UNICOM 122.95
----------------------	--------------------------------------	--	-------------------------	---------------------------	-------------------------



NE-1, 22 OCT 2009 to 19 NOV 2009

NE-1, 22 OCT 2009 to 19 NOV 2009



CATEGORY	A	B	C	D
S-ILS 11		383/50	250 (300-1)	
S-LOC 11		720/50	587 (600-1)	720/60 587 (600-1¼)
CIRCLING	720 - 1	587 (600-1)	720 - 1½ 587 (600-1½)	780 - 2 647 (700-2)
SUVVO FIX MINIMUMS				
S-LOC 11		660/50	527 (600-1)	660/60 527 (600-1¼)
CIRCLING	680 - 1	547 (600-1)	700 - 1½ 567 (600-1½)	780 - 2 647 (700-2)

MIRL Rwy 5-23	HIRL Rwy 11-29	REIL Rwy 5 and 23			
FAF to MAP 5.3 NM					
Knots	60	90	120	150	180
Min:Sec	5:18	3:32	2:39	2:07	1:46