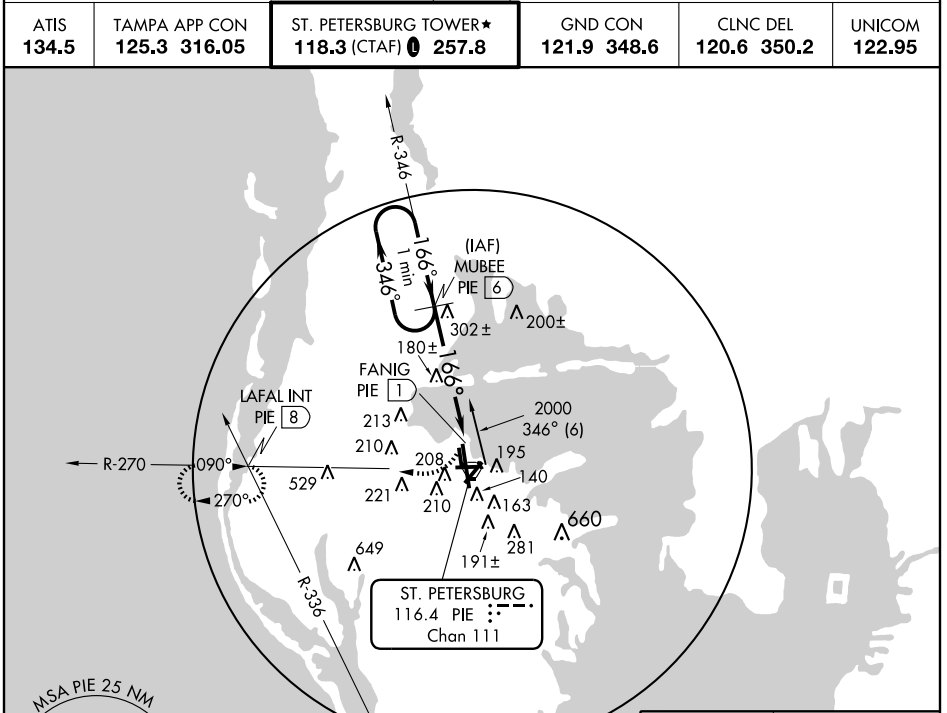


VORTAC PIE 116.4 Chan 111	APP CRS 166°	Rwy Idg TDZE Apt Elev	9180 8 11
--	------------------------	-----------------------------	--------------------------------------

VOR/DME RWY 17L

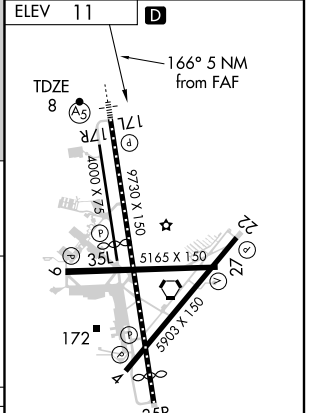
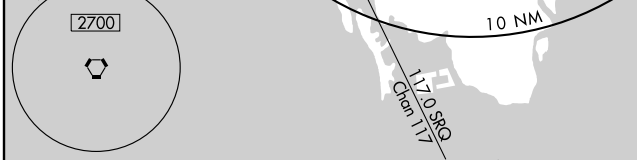
ST. PETERSBURG-CLEARWATER INTL (PIE)

	MISSED APPROACH: Climbing right turn to 1700 via PIE R-270 to LAFAL Int/PIE 8 DME and hold.				
	ATIS 134.5	TAMPA APP CON 125.3 316.05	ST. PETERSBURG TOWER★ 118.3 (CTAF) 0 257.8	GND CON 121.9 348.6	CLNC DEL 120.6 350.2



SE-3, 22 OCT 2009 to 19 NOV 2009

SE-3, 22 OCT 2009 to 19 NOV 2009



One Minute Holding Pattern	MUBEE PIE 6	1700	LAFAL INT
← 346°	→ 166°	PIE R-270 116.4	
1700	1600		
	2.90° TCH 50		
	3.7 NM	1.3 NM	

CATEGORY	A	B	C	D
S-17L	480/24	472 (500-½)	480/40 472 (500-¾)	480/50 472 (500-1)
CIRCLING	520-1	509 (600-1)	520-1½ 509 (600-1½)	580-2 569 (600-2)

TDZ/CL Rwy 17L
REIL Rwys 4, 9, 22, and 27
MIRL Rwys 4-22 and 9-27
HIRL Rwy 17L-35R