

(PIE3.PIE) 08325

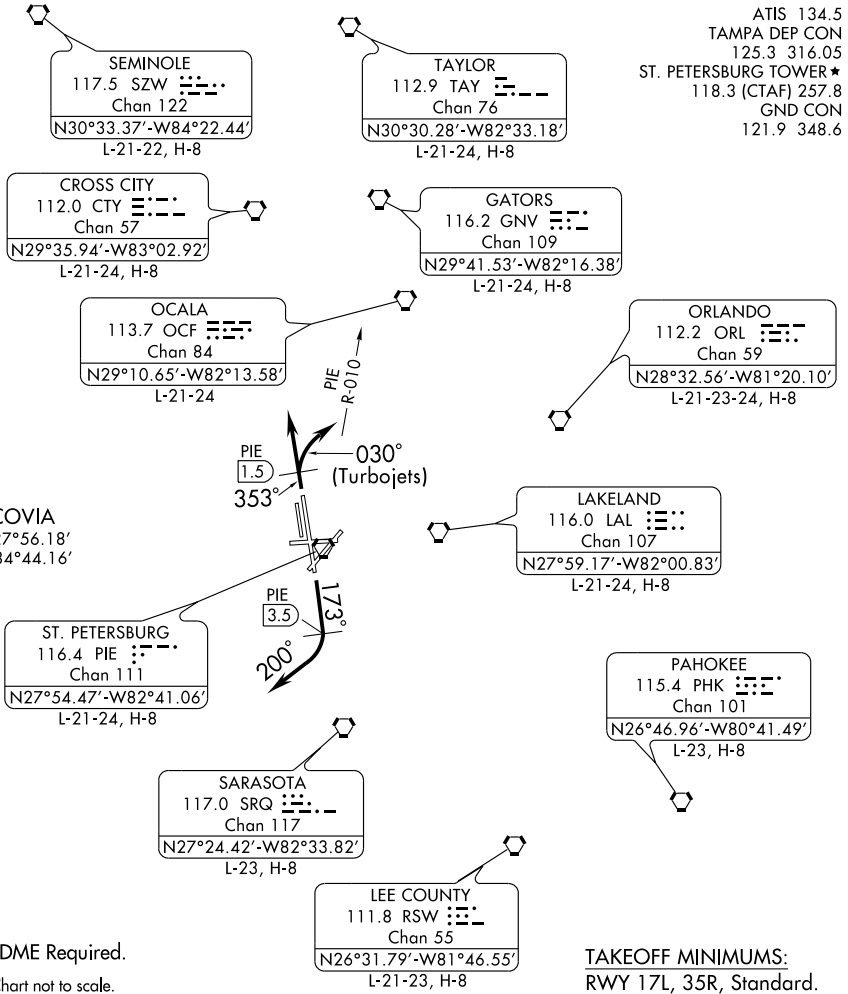
SL-625 (FAA)

ST. PETERSBURG-CLEARWATER INTL (PIE)
ST. PETERSBURG-CLEARWATER, FLORIDA

ST. PETE THREE DEPARTURE

SE-3, 22 OCT 2009 to 19 NOV 2009

SE-3, 22 OCT 2009 to 19 NOV 2009



NOTE: DME Required.

NOTE: Chart not to scale.

TAKEOFF MINIMUMS:

RWY 17L, 35R, Standard.

DEPARTURE ROUTE DESCRIPTION

TAKE-OFF RWY 17L: Climb heading 173° until PIE VORTAC 3.5 DME, then turn right heading 200° or as assigned. Expect radar vectors to filed/assigned route, thence...

TAKE-OFF RWY 35R: TURBOJETS climb heading 353° until PIE VORTAC 1.5 DME, then turn right heading 030° to intercept and fly outbound on the DME R-010, thence...

ALL OTHERS fly heading 353° or as assigned. Expect radar vectors to filed/assigned route. Thence...

Maintain 1600, expect further clearance to filed altitude 10 minutes after departure.

(CONTINUED ON NEXT PAGE)

ST. PETE THREE DEPARTURE
(PIE3.PIE) 08325

ST. PETERSBURG-CLEARWATER, FLORIDA
ST. PETERSBURG-CLEARWATER INTL (PIE)