

WAAS CH 56226 W35A	APP CRS 353°	Rwy Idg TDZE 10 Apt Elev 11	8720
--	------------------------	---	-------------

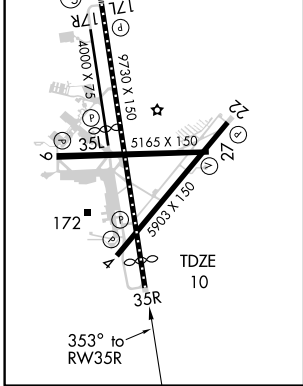
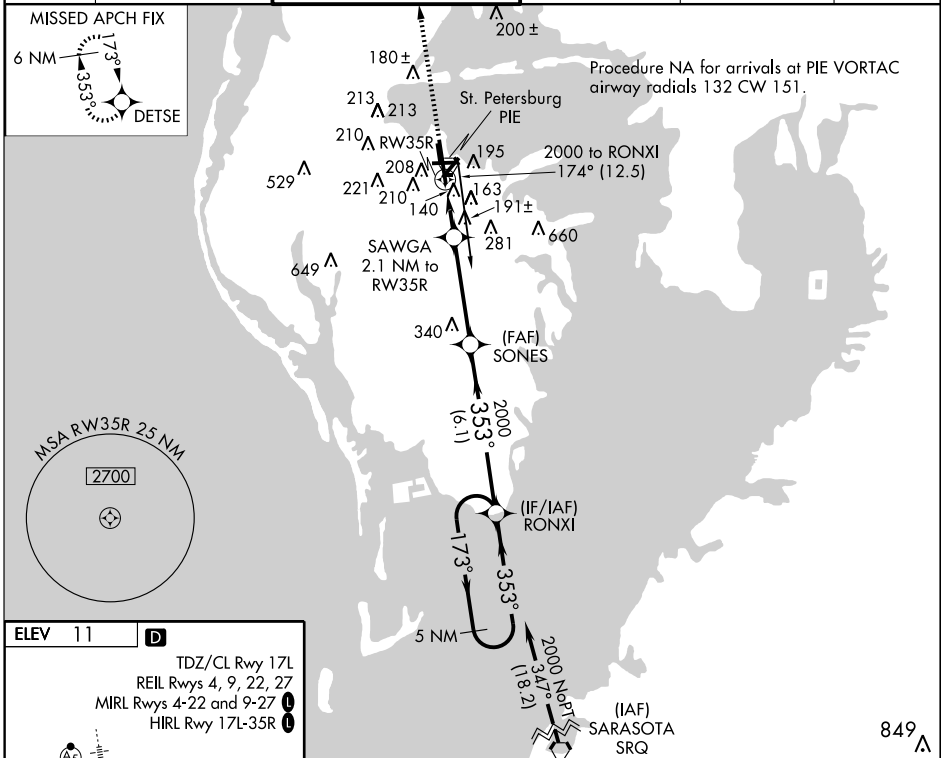
RNAV (GPS) RWY 35R

ST. PETERSBURG-CLEARWATER INTL (PIE)

▼ When local altimeter setting not received, use Tampa Intl altimeter setting and increase LPV DA to 233 feet, LNAV/VNAV DA to 471; increase all MDAs 40 feet.
▲ VDP and Baro-VNAV NA when using Tampa Intl altimeter setting. For uncompensated Baro-VNAV systems, LNAV/VNAV NA below -15°C (5°F) or above 49°C (120°F).
 DME/DME RNP -0.3 NA.

MISSED APPROACH: Climb to 2600 direct DETSE and hold.

ATIS 134.5	TAMPA APP CON 125.3 316.05	ST. PETERSBURG TOWER ★ 118.3 (CTAF) 0 257.8	GND CON 121.9 348.6	CLNC DEL 120.6 350.2	UNICOM 122.95
----------------------	--------------------------------------	---	-------------------------------	--------------------------------	-------------------------



2600 DETSE	VGSIs and RNAV glidepath not coincident.			4 NM
↑	SAWGA 2.1 NM to RW35R	SONES	RONXI	Holding Pattern
*LNAV only	*1.2 NM to RW35R	*720	353°	173°
1.2	0.9	3.9 NM	6.1 NM	2000
CATEGORY	A	B	C	D
LPV DA	210-3/4 200 (200-3/4)			
LNAV/VNAV DA	448-1 1/2 438 (500-1 1/2)			
LNAV MDA	460-1	450 (500-1)	460-1 1/4 450 (500-1 1/4)	460-1 1/2 450 (500-1 1/2)
CIRCLING	520-1	509 (600-1)	520-1 1/2 509 (600-1 1/2)	580-2 569 (600-2)