

# ILS or LOC RWY 17L

ST. PETERSBURG-CLEARWATER INTL (PIE)

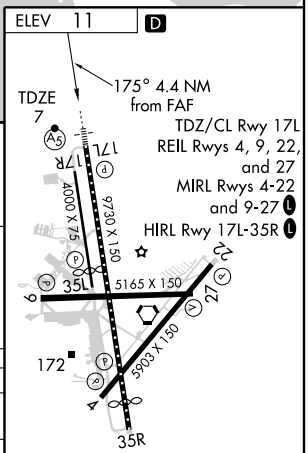
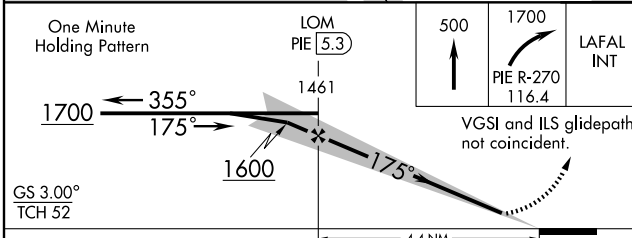
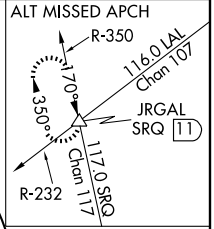
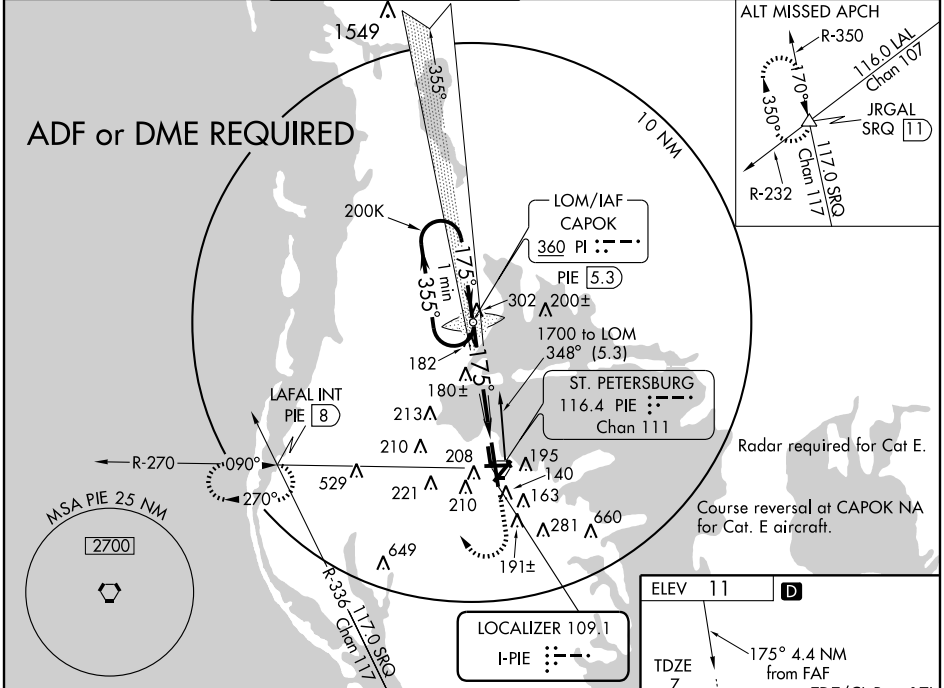
LOC I-PIE <b>109.1</b>	APP CRS <b>175°</b>	Rwy Idg TDZE Apt Elev	<b>9180</b> <b>7</b> <b>11</b>
---------------------------	------------------------	-----------------------------	--------------------------------------

When local altimeter setting not received, use Tampa Intl altimeter setting and increase S-ILS 17L DA to 230 feet; increase all MDA 40 feet and S-LOC 17L Cat. E visibility to RVR 6000. For inoperative MALSR, increase S-ILS 17L Cat. E visibility to RVR 4000 and S-LOC 17L Cat. E visibility to 1½ mile. When using Tampa Intl altimeter setting, increase S-ILS 17L Cat E. visibility to RVR 4000 and S-LOC 17L Cat. E visibility to 1¾ mile. ADF or DME Required.

MALSR  


MISSED APPROACH: Climb to 500 then climbing right turn to 1700 via PIE VORTAC R-270 to LAFAL Int/PIE 8 DME and hold.

ATIS <b>134.5</b>	TAMPA APP CON <b>125.3 316.05</b>	ST. PETERSBURG TOWER★ <b>118.3 (CTAF) 0 257.8</b>	GND CON <b>121.9 348.6</b>	CLNC DEL <b>120.6 350.2</b>	UNJCOM <b>122.95</b>
----------------------	--------------------------------------	--	-------------------------------	--------------------------------	-------------------------



CATEGORY	A	B	C	D	E
S-ILS 17L	207/18		200 (200-½)	207/24 200 (200-½)	
S-LOC 17L	440/24	433 (500-½)	440/40 433 (500-¾)	440/50	433 (500-1)
CIRCLING	520-1	509 (600-1)	520-1½ 509 (600-1½)	580-2 569 (600-2)	960-3 949 (1000-3)

FAF to MAP 4.4 NM					
Knots	60	90	120	150	180
Min:Sec	4:24	2:56	2:12	1:46	1:28

SE-3, 22 OCT 2009 to 19 NOV 2009

SE-3, 22 OCT 2009 to 19 NOV 2009