

ILS RWY 17L (CAT II)

ST. PETERSBURG-CLEARWATER INTL (PIE)

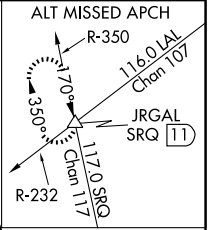
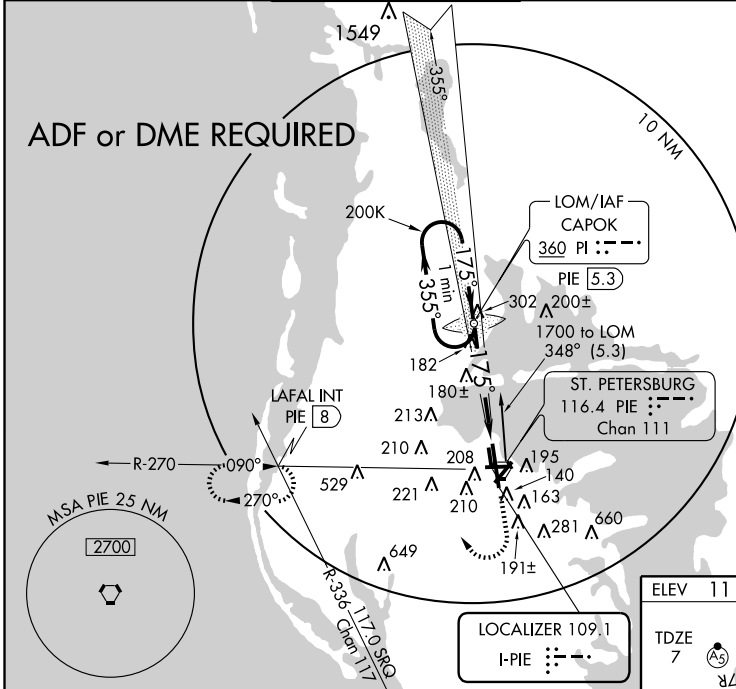
LOC I-PIE 109.1	APP CRS 175°	Rwy Idg TDZE Apt Elev	9180 7 11
---------------------------	------------------------	-----------------------------	--------------------------------------

⚠ CAT II procedure does not meet ICAO standard for ALSF/TDZ/CL lighting systems. Authorization to conduct this approach requires specific OPSSPEC approval or LOA for this runway. ADF or DME Required.
⚠ CAT II S-ILS R17L NA when control tower closed.
 CAT II S-ILS R17L NA when using Tampa Intl altimeter setting.

MALSR

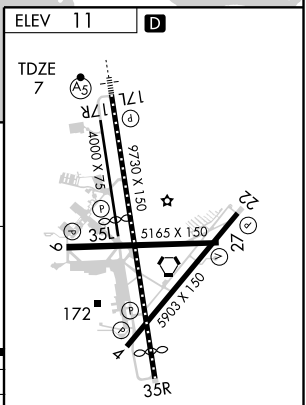
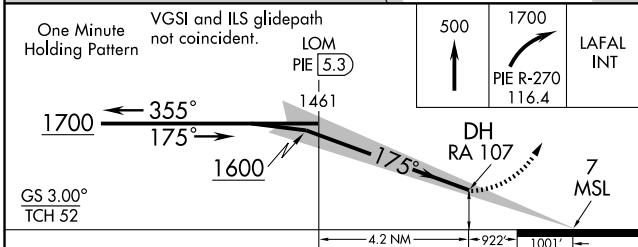

MISSED APPROACH: Climb to 500 then climbing right turn to 1700 via PIE VORTAC R-270 to LAFAL Int/PIE 8 DME and hold.

ATIS 134.5	TAMPA APP CON 125.3 316.05	ST. PETERSBURG TOWER★ 118.3 (CTAF) 0 257.8	GND CON 121.9 348.6	CLNC DEL 120.6 350.2	UNICOM 122.95
----------------------	--------------------------------------	--	-------------------------------	--------------------------------	-------------------------



SE-3, 22 OCT 2009 to 19 NOV 2009

SE-3, 22 OCT 2009 to 19 NOV 2009



CATEGORY	A	B	C	D
S-ILS 17L		107/16	100 RA 107	

CATEGORY II ILS - SPECIAL AIRCREW & AIRCRAFT CERTIFICATION REQUIRED

TDZ/CL Rwy 17L
 REIL Rws 4, 9, 22, and 27
 MIRL Rws 4-22 and 9-27
 HIRL Rwy 17L-35R