

RNAV (GPS) RWY 4

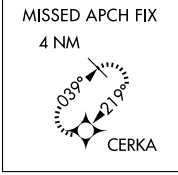
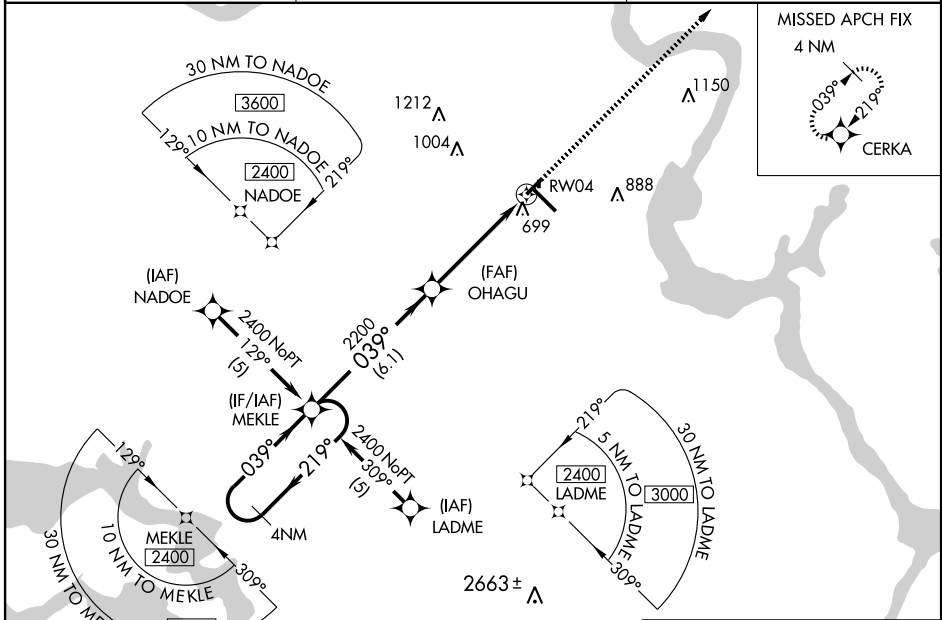
MUSKOGEE/DAVIS FIELD (MKO)

APP CRS	Rwy Idg	4498
039°	TDZE	611
	Apt Elev	611

▼ Straight-in minimums NA at night. For uncompensated Baro-VNAV systems, LNAV/VNAV NA below -16°C (4°F) or above 47°C (116°F). DME/DME RNP-0.3 NA. Baro-VNAV and VDP NA when using Tahelequah altimeter setting. When local altimeter setting not received, use Tahelequah altimeter setting and increase DA 92 feet and all visibilities 1/4 mile, all MDA 100 feet, Cat C and D visibilities 1/4 mile.

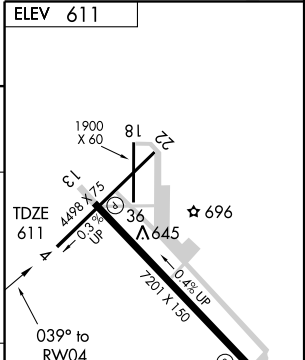
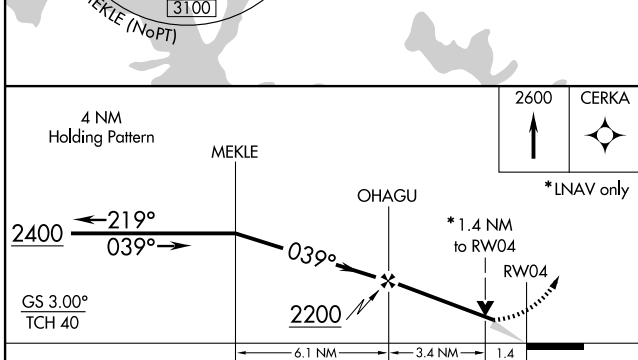
⚠ MISSED APPROACH: Climb to 2600 direct CERKA and hold.

ASOS 135,025	FORT WORTH CENTER 132.2 338,35	UNICOM 122.8 (CTAF) 0
------------------------	--	---------------------------------



SC-1, 22 OCT 2009 to 19 NOV 2009

SC-1, 22 OCT 2009 to 19 NOV 2009



CATEGORY	A	B	C	D
LNAV/VNAV DA	1079-1 3/4 468 (500-1 1/4)			
LNAV MDA	1080-1	469 (500-1)	1080-1 1/4 469 (500-1 1/4)	1080-1 1/2 469 (500-1 1/2)
CIRCLING	1120-1 509 (600-1)	1160-1 549 (600-1)	1180-1 1/2 569 (600-1 1/2)	1200-2 589 (600-2)

MIRL Rwy 13-31 0