

RNAV (GPS) RWY 31

MUSKOGEE/ DAVIS FIELD (MKO)

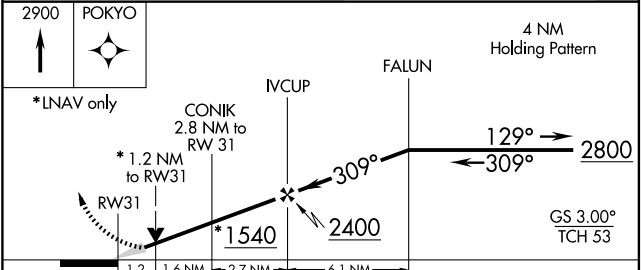
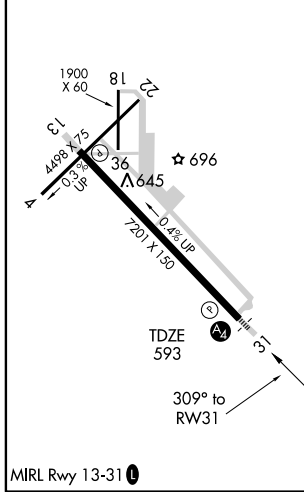
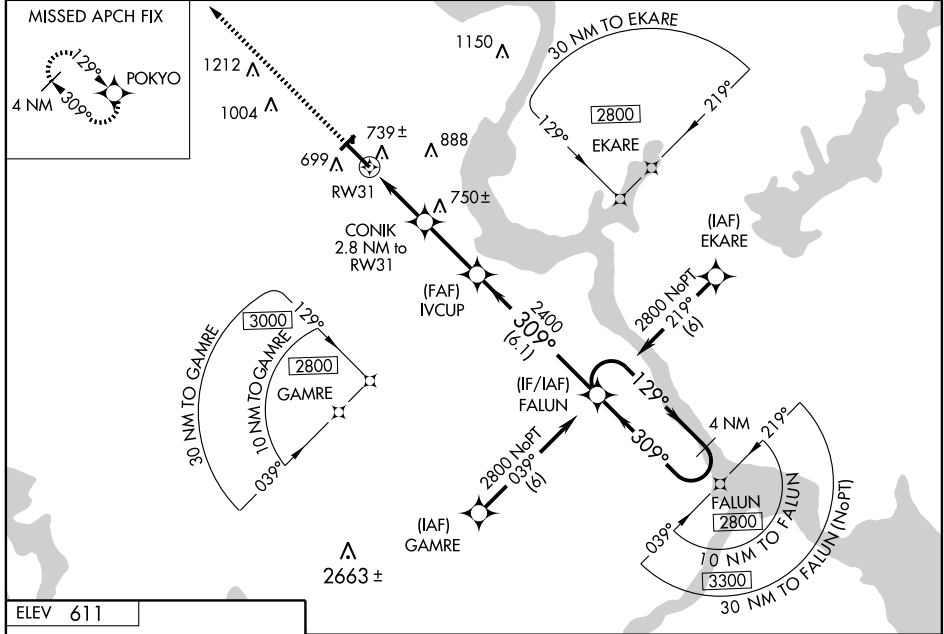
WAAS CH 42807 W31B	APP CRS 309°	Rwy Idg TDZE Apt Elev	7201 593 611
--	------------------------	-----------------------------	---

For uncompensated Baro-VNAV systems, procedure NA below -16°C (4°F) or above 47°C (116°F). Baro-VNAV and VDP NA when using Tahlequah altimeter setting. When local altimeter setting not received, use Tahlequah altimeter setting and increase all DA 92 feet, visibilities ¼ mile; increase all MDA 100 feet, LNAV visibilities Cat C/D/E ¼ mile, and Circling Cat C ¼ mile. Inoperative table does not apply to LNAV/VNAV Cat A/B/C and LNAV Cat C.



MISSED APPROACH: Climb to 2900 direct POKYO and hold.

ASOS 135.025	FORT WORTH CENTER 132.2 338.35	UNICOM 122.8 (CTAF)
------------------------	--	-------------------------------



CATEGORY	A	B	C	D	E
LPV DA	843-1		250 (300-1)		
LNAV/ VNAV DA	1139-2		546 (600-2)		
LNAV MDA	1000-¾	407 (400-¾)	1000-¼	407 (400-¼)	1000-1½
CIRCLING	1120-1	1160-1	1180-1½	1200-2	1580-3
	509 (600-1)	549 (600-1)	569 (600-1½)	589 (600-2)	969 (1000-3)

SC-1, 22 OCT 2009 to 19 NOV 2009

SC-1, 22 OCT 2009 to 19 NOV 2009