

APP CRS	Rwy Idg	4498
219°	TDZE	597
	Apt Elev	611

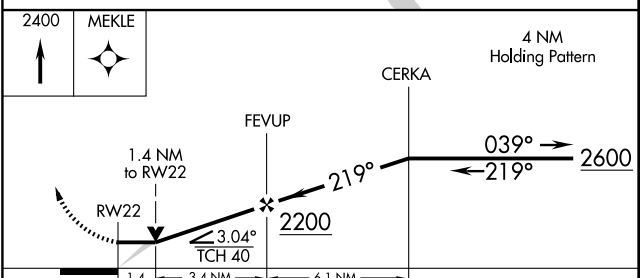
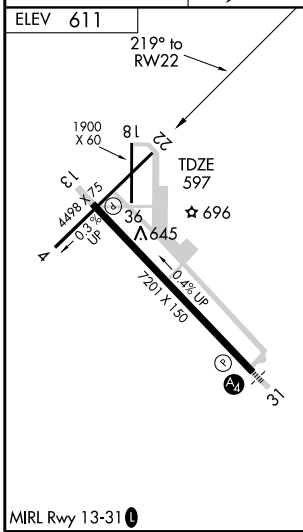
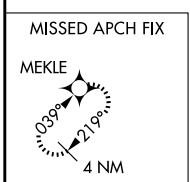
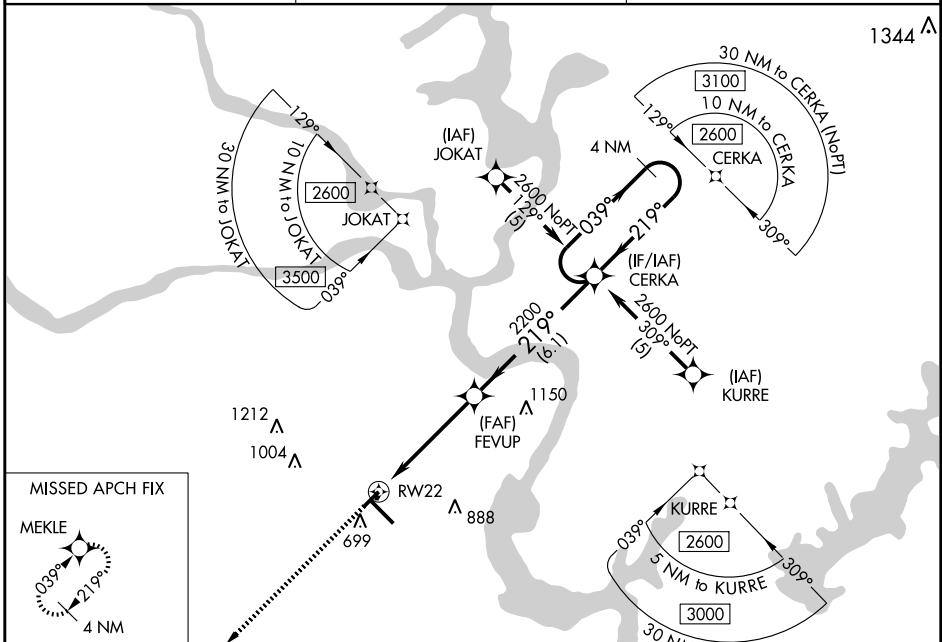
RNAV (GPS) RWY 22

MUSKOGEE/ DAVIS FIELD (MKO)

▼ Straight-in minimums NA at night. DME/DME RNP-0.3 NA. When local altimeter setting not received, use Tahlequah altimeter setting and increase all MDA 100 feet, increase LNAV Cat C visibility ¼ mile, Cat D visibility ½ mile, increase circling Cat C visibility ¼ mile.

▲ MISSED APPROACH: Climb to 2400 direct MEKLE and hold.

ASOS 135.025	FORT WORTH CENTER 132.2 338.35	UNICOM 122.8 (CTAF) ▲
------------------------	--	---------------------------------



CATEGORY	A	B	C	D
LNAV MDA	1100-1	503 (500-1)	1100-1½	503 (500-1½)
CIRCLING	1120-1 509 (600-1)	1160-1 549 (600-1)	1180-1½ 569 (600-1½)	1200-2 589 (600-2)

SC-1, 22 OCT 2009 to 19 NOV 2009

SC-1, 22 OCT 2009 to 19 NOV 2009