

RNAV (GPS) RWY 13

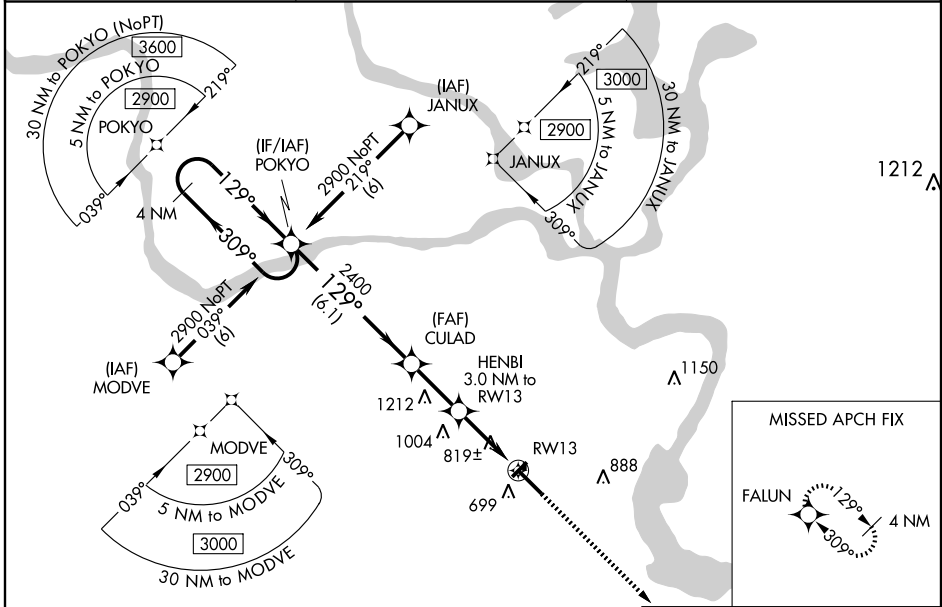
MUSKOGEE/DAVIS FIELD (MKO)

WAAS CH 70607 W13A	APP CRS 129°	Rwy Idg 7201 TDZE 607 Apt Elev 611
--	------------------------	---

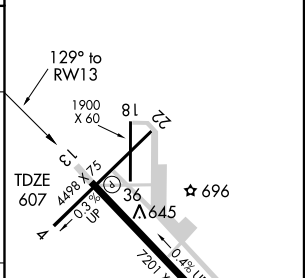
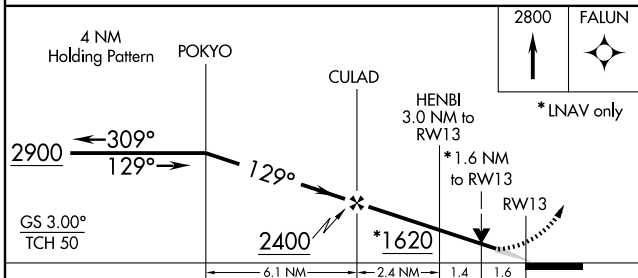
⚠ For uncompensated Baro-VNAV systems, procedure NA below -16°C (4°F) or above 47°C (116°F). DME/DME RNP-0.3 NA. Baro-VNAV and VDP NA when using Tahlequah altimeter setting. When local altimeter setting not received, use Tahlequah altimeter setting and increase all DA 92 feet; increase LPV visibility ½ mile all Cats. Increase LNAV/VNAV visibility ¼ mile all Cats, increase all MDA 100 feet and LNAV Cat C/D/E visibility ½ mile, Circling visibility Cat C/D ¼ mile.

MISSED APPROACH: Climb to 2800 direct FALUN and hold.

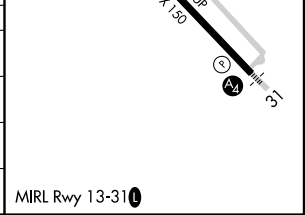
ASOS 135.025	FORT WORTH CENTER 132.2 338.35	UNICOM 122.8 (CTAF) 0
------------------------	--	---------------------------------



ELEV 611



CATEGORY	A	B	C	D	E
LPV DA	857-¾		250 (300-¾)		
LNAV/VNAV DA	1142-2		535 (600-2)		
LNAV MDA	1180-1	573 (600-1)	1180-1½ 573 (600-1½)	1180-1¾ 573 (600-1¾)	1180-2 573 (600-2)
CIRCLING	1180-1	569 (600-1)	1180-1½ 569 (600-1½)	1200-2 589 (600-2)	1580-3 969 (1000-3)



SC-1, 22 OCT 2009 to 19 NOV 2009

SC-1, 22 OCT 2009 to 19 NOV 2009