

TYLER, TEXAS

AL-622 (FAA)

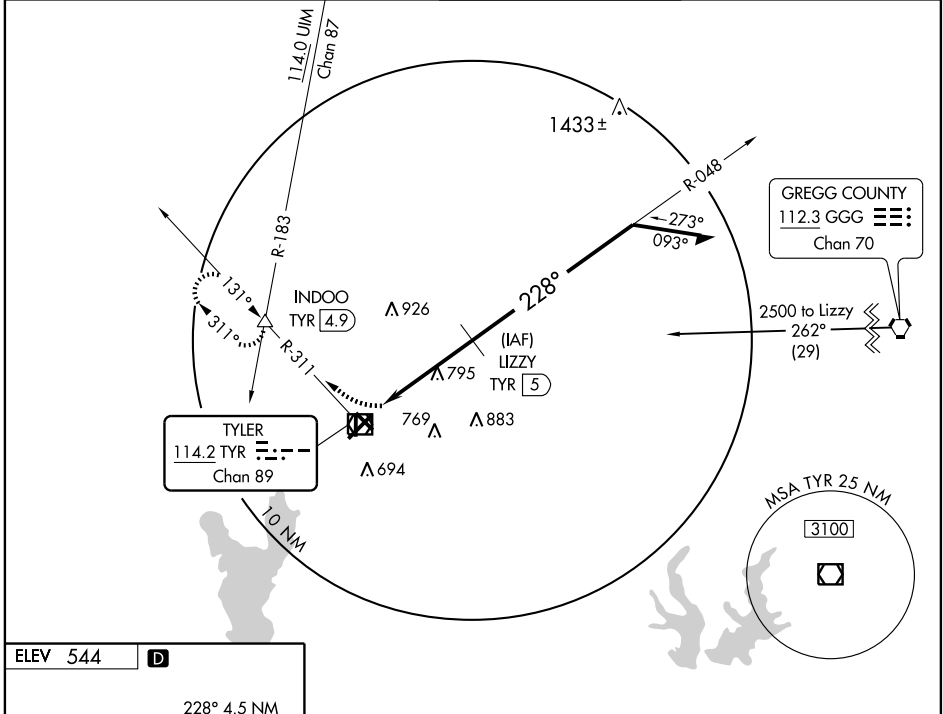
VOR/DME TYR 114.2 Chan 89	APP CRS 228°	Rwy Idg 7200 TDZE 538 Apt Elev 544
-----------------------------------------------	------------------------	---------------------------------------------------------------

VOR/DME RWY 22

TYLER POUNDS RGNL (TYR)

A MISSED APPROACH: Climbing right turn to 2200 via TYR VOR/DME R-311 to INDOO Int/4.9 DME and hold.

ASOS * 126.25	ATIS 126.25	LONGVIEW APP CON * 128.75 379.15	POUNDS TOWER * 120.1 (CTAF) 0 257.8	GND CON 121.9	UNICOM 122.95
-------------------------	-----------------------	--------------------------------------------	-----------------------------------------------	-------------------------	-------------------------

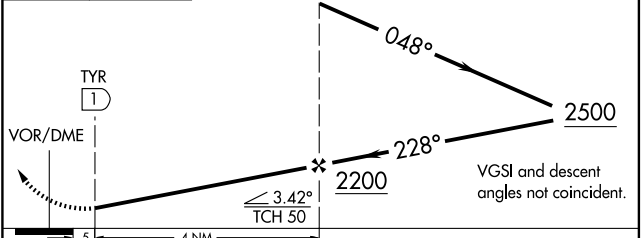


SC-2, 22 OCT 2009 to 19 NOV 2009

SC-2, 22 OCT 2009 to 19 NOV 2009



REIL Rws 4 and 22
 HIRL Rwy 13-31
 MIRL Rws 4-22 and 17-35



CATEGORY	A	B	C	D
S-22	1060-1 522 (600-1)		1060-1½ 522 (600-1½)	1060-1¾ 522 (600-1¾)
CIRCLING	1060-1 516 (600-1)		1060-1½ 516 (600-1½)	1120-2 576 (600-2)

TYLER, TEXAS
 Amdt 3E 09015

32°21'N-95°24'W

TYLER POUNDS RGNL (TYR) VOR/DME RWY 22