

TYLER, TEXAS

AL-622 (FAA)

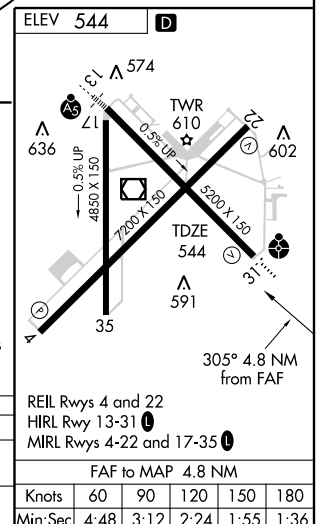
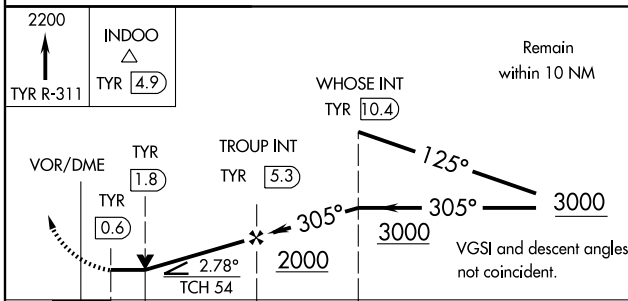
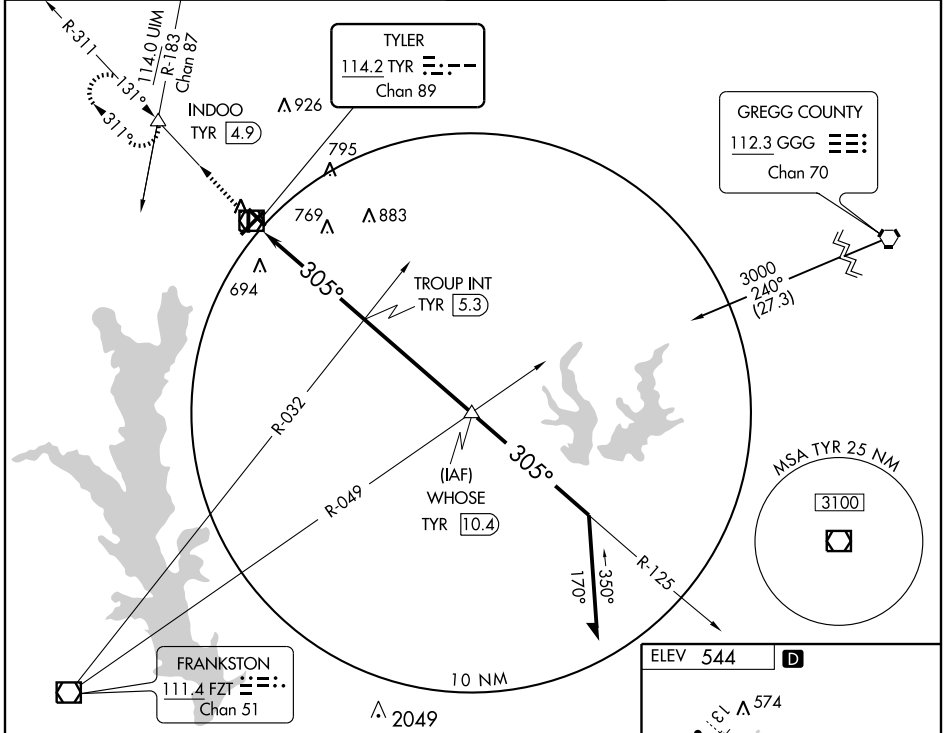
VOR/DME TYR <b>114.2</b> Chan 89	APP CRS <b>305°</b>	Rwy Idg TDZE Apt Elev <b>5200</b> <b>544</b> <b>544</b>
--	------------------------	--

# VOR RWY 31

TYLER POUNDS RGNL (TYR)

<b>▲</b> Inoperative table does not apply to Cat C.	ODALS 	MISSED APPROACH: Climb to 2200 via TYR VOR/DME R-311 to INDOO Int/4.9 DME and hold.
---	-----------	---

ASOS ★ <b>126.25</b>	ATIS <b>126.25</b>	LONGVIEW APP CON ★ <b>128.75 379.15</b>	POUNDS TOWER ★ <b>120.1 (CTAF) 257.8</b>	GND CON <b>121.9</b>	UNICOM <b>122.95</b>
-------------------------	-----------------------	--	---	-------------------------	-------------------------



CATEGORY	A	B	C	D
S-31	1000- <sup>3</sup> / <sub>4</sub> 456 (500- <sup>3</sup> / <sub>4</sub> )		1000-1 <sup>1</sup> / <sub>4</sub> 456 (500-1 <sup>1</sup> / <sub>4</sub> )	1000-1 <sup>1</sup> / <sub>2</sub> 456 (500-1 <sup>1</sup> / <sub>2</sub> )
CIRCLING	1000- 1 456 (500- 1)		1000-1 <sup>1</sup> / <sub>2</sub> 456 (500-1 <sup>1</sup> / <sub>2</sub> )	1120- 2 576 (600- 2)

TYLER, TEXAS  
Amdt 1D 09015

32°21'N-95°24'W

TYLER POUNDS RGNL (TYR)  
**VOR RWY 31**

SC-2, 22 OCT 2009 to 19 NOV 2009

SC-2, 22 OCT 2009 to 19 NOV 2009