

TYLER, TEXAS

AL-622 (FAA)

# RNAV (GPS) RWY 4

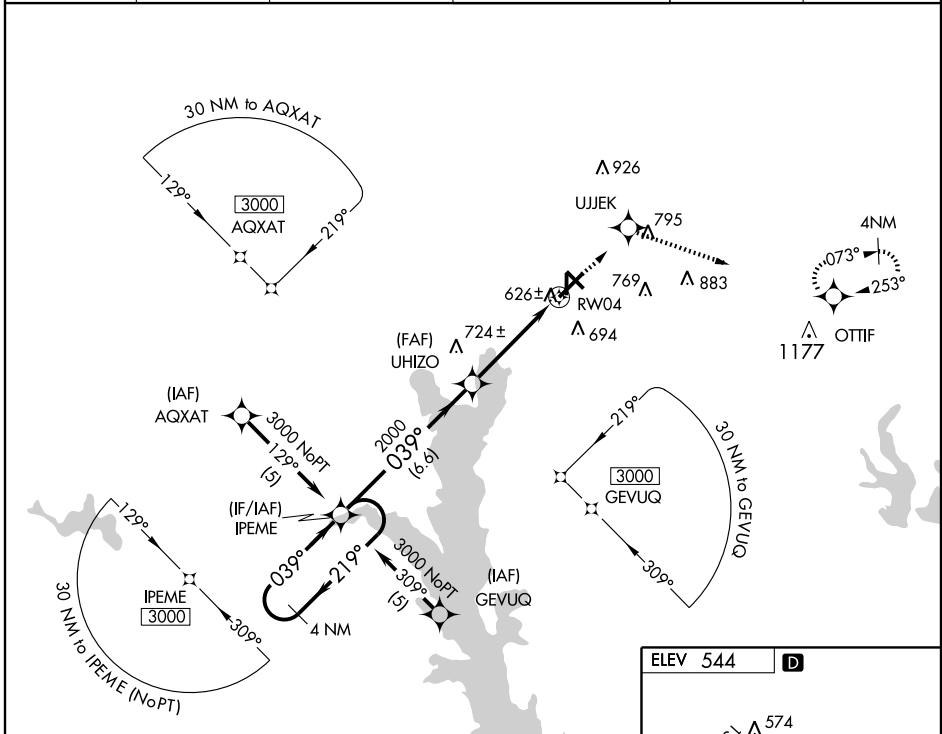
TYLER POUNDS RGNL (TYR)

WAAS CH <b>40014</b> <b>W04A</b>	APP CRS <b>039°</b>	Rwy Idg <b>7200</b> TDZE <b>541</b> Apt Elev <b>544</b>
--	------------------------	---

**▼** DME/DME RNP-0.3 NA.  
Baro-VNAV NA below -16°C (4°F).  
Circling NA at night to Rwy 17.

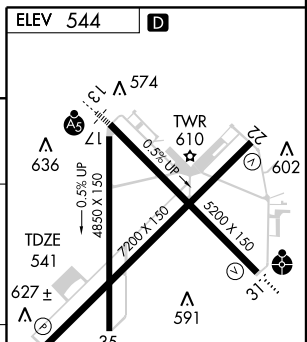
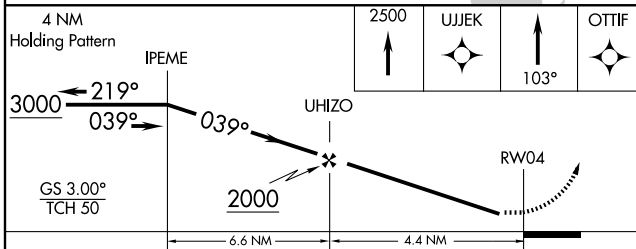
MISSED APPROACH: Climb to 2500 direct UJJEK and via 103° track to OTTIF and hold.

ASOS * <b>126.25</b>	ATIS <b>126.25</b>	LONGVIEW APP CON * <b>128.75 379.15</b>	POUNDS TOWER * <b>120.1 (CTAF) 0 257.8</b>	GND CON <b>121.9</b>	UNICOM <b>122.95</b>
-------------------------	-----------------------	--	---	-------------------------	-------------------------



SC-2, 22 OCT 2009 to 19 NOV 2009

SC-2, 22 OCT 2009 to 19 NOV 2009



CATEGORY	A	B	C	D
LPV DA		834-1	293 (300-1)	
LNAV/VNAV DA		941-1½	400 (400-1½)	
LNAV MDA		880-1	339 (400-1)	
CIRCLING	960-1½ 416 (500-1½)	1000-1½	456 (500-1½)	1120-2 576 (600-2)

REIL Rwy 4 and 22  
HIRL Rwy 13-31  
MIRL Rwy 4-22 and 17-35

TYLER, TEXAS  
Amdt 1 09015

32°21'N-95°24'W

## TYLER POUNDS RGNL (TYR) RNAV (GPS) RWY 4