

# RNAV (GPS) RWY 13

TYLER POUNDS RGNL (TYR)

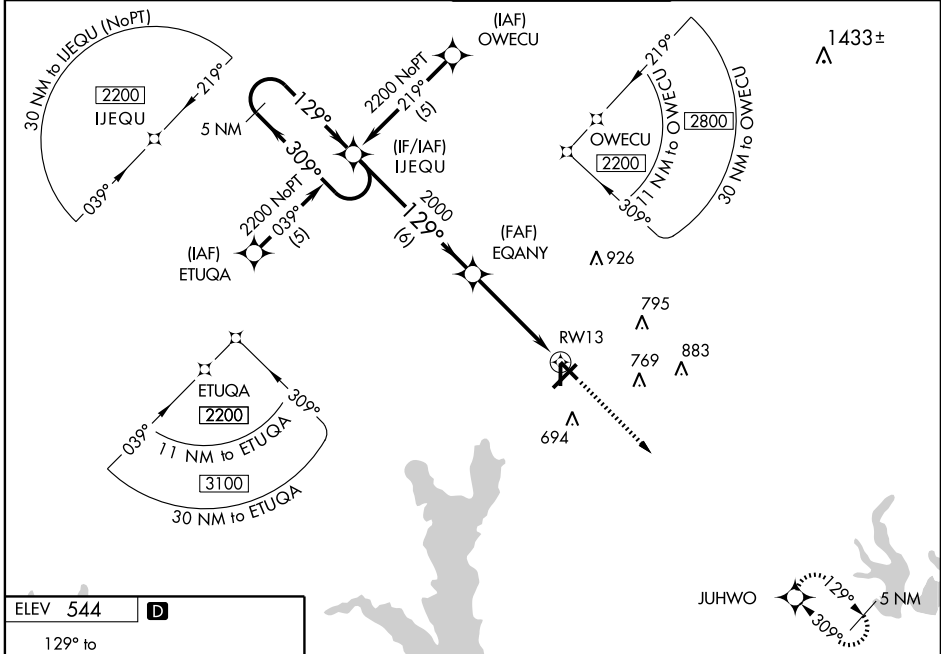
WAAS CH <b>45701</b> <b>W13A</b>	APP CRS <b>129°</b>	Rwy Idg <b>5200</b> TDZE <b>539</b> Apt Elev <b>544</b>
--	------------------------	---

- ⚠** Circling to Rwy 17 NA at night. For inoperative MALS/R increase LPV all Cats visibility to 1, and LNAV Cat D visibility to 1/4. For uncompensated Baro-VNAV systems,
- ⚠** LNAV/VNAV NA below -16°C (4°F) or above 47°C (117°F). If local altimeter setting not received, use East Texas Rgnl altimeter setting and increase all DAs/MDAs 120 feet. VDP and Baro-VNAV NA when using East Texas Rgnl altimeter setting. DME/DME RNP-0.3 NA.

MALS/R

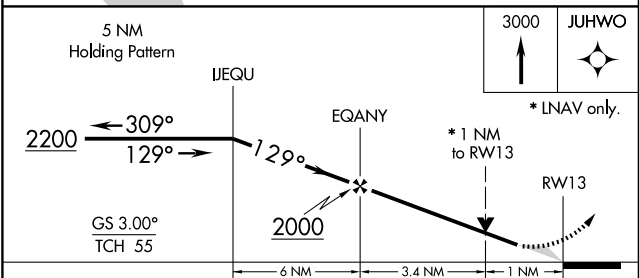
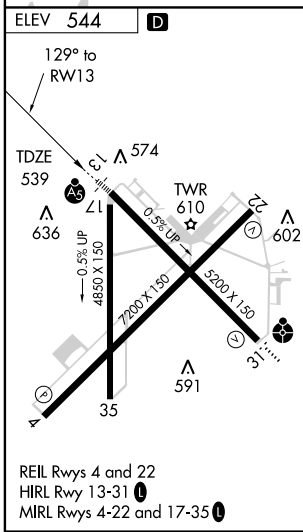
MISSED APPROACH:  
Climb to 3000 direct  
JUHWO and hold.

ASOS* <b>126.25</b>	ATIS <b>126.25</b>	LONGVIEW APP CON* <b>128.75 379.15</b>	POUNDS TOWER* <b>120.1 (CTAF) 257.8</b>	GND CON <b>121.9</b>	UNICOM <b>122.95</b>
------------------------	-----------------------	---	--	-------------------------	-------------------------



SC-2, 22 OCT 2009 to 19 NOV 2009

SC-2, 22 OCT 2009 to 19 NOV 2009



CATEGORY	A	B	C	D
LPV DA		789-1/2	250 (300-1/2)	
LNAV/VNAV DA		886-3/4	347 (400-3/4)	
LNAV MDA	960-1/2	361 (400-1/2)		900-1 361 (400-1)
CIRCLING	960-1/4 416 (500-1/4)	1000-1/4 456 (500-1/4)	1000-1/2 456 (500-1/2)	1120-2 576 (600-2)