

ILS RWY 6

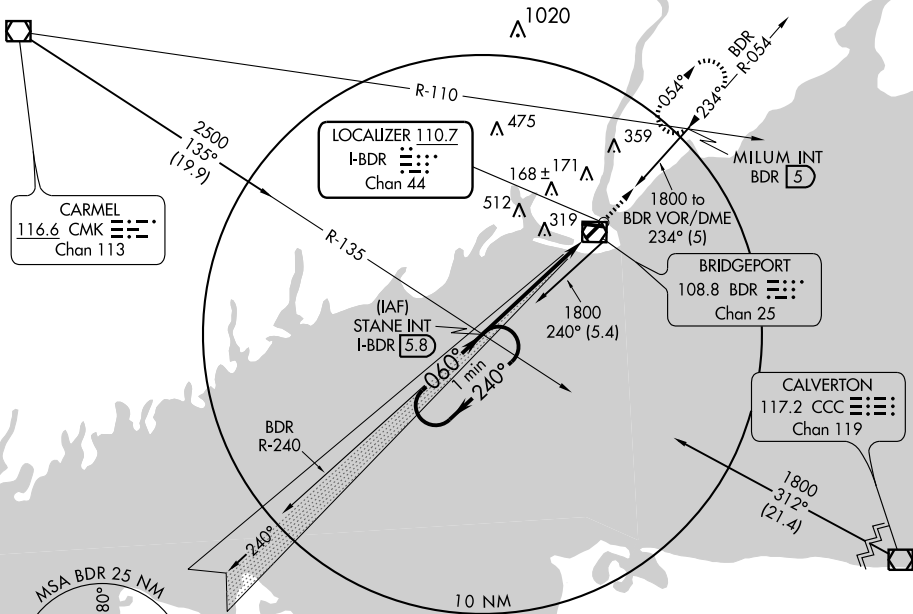
BRIDGEPORT/ IGOR I. SIKORSKY MEMORIAL (BDR)

LOC/DME I-BDR	APP CRS	Rwy Idg	4677
110.7	060°	TDZE	7
Chan 44		Apt Elev	10



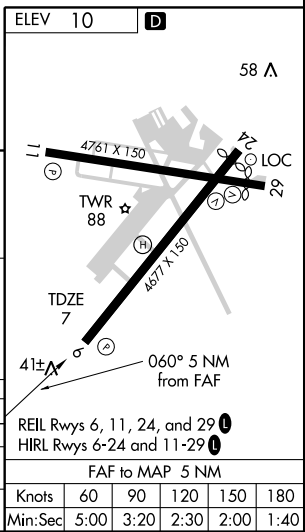
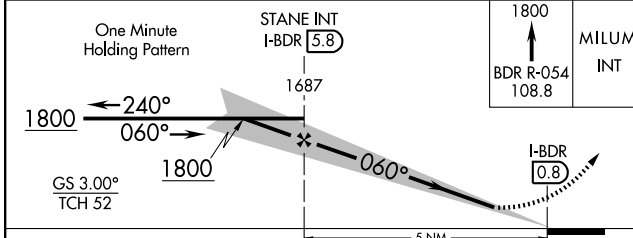
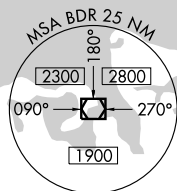
MISSED APPROACH: Climb to 1800 via BDR-054 to MILUM Int and hold.

ATIS 119.15	NEW YORK APP CON 124.075 343.65	BRIDGEPORT RADIO 122.2	BRIDGEPORT TOWER* 120.90 (CTAF) 257.8	GND CON 121.9 257.8	CLNC DEL 121.75
----------------	------------------------------------	---------------------------	--	------------------------	--------------------



NE-1, 22 OCT 2009 to 19 NOV 2009

NE-1, 22 OCT 2009 to 19 NOV 2009



CATEGORY	A	B	C	D
S-ILS 6		307 - 1	300 (300-1)	
S-LOC 6		380-1	373 (400-1)	380-1 1/4 373 (400-1 1/4)
CIRCLING	420-1 410 (500-1)	620-1 610 (700-1)	620-1 3/4 610 (700-1 3/4)	820-2 1/2 810 (900-2 1/2)

REIL Rwy 6, 11, 24, and 29	
HIRL Rwy 6-24 and 11-29	
FAF to MAP 5 NM	
Knots	60 90 120 150 180
Min:Sec	5:00 3:20 2:30 2:00 1:40